

# COLLINS TOWNSHIP

Each township has six files containing six sections in each, and one file containing all 36 sections.

Collins01to06.pdf  
Collins07to12.pdf  
Collins13to18.pdf  
Collins19to24.pdf  
Collins25to30.pdf  
Collins31to36.pdf  
CollinsAll36.pdf

The points are listed starting with the point above the SE corner and continuing in a counter-clockwise rotation around the section. This normally begins with the East point, Northeast, then North, but may also include Witness Corners, and/or Meander Corners.

## **Definitions**

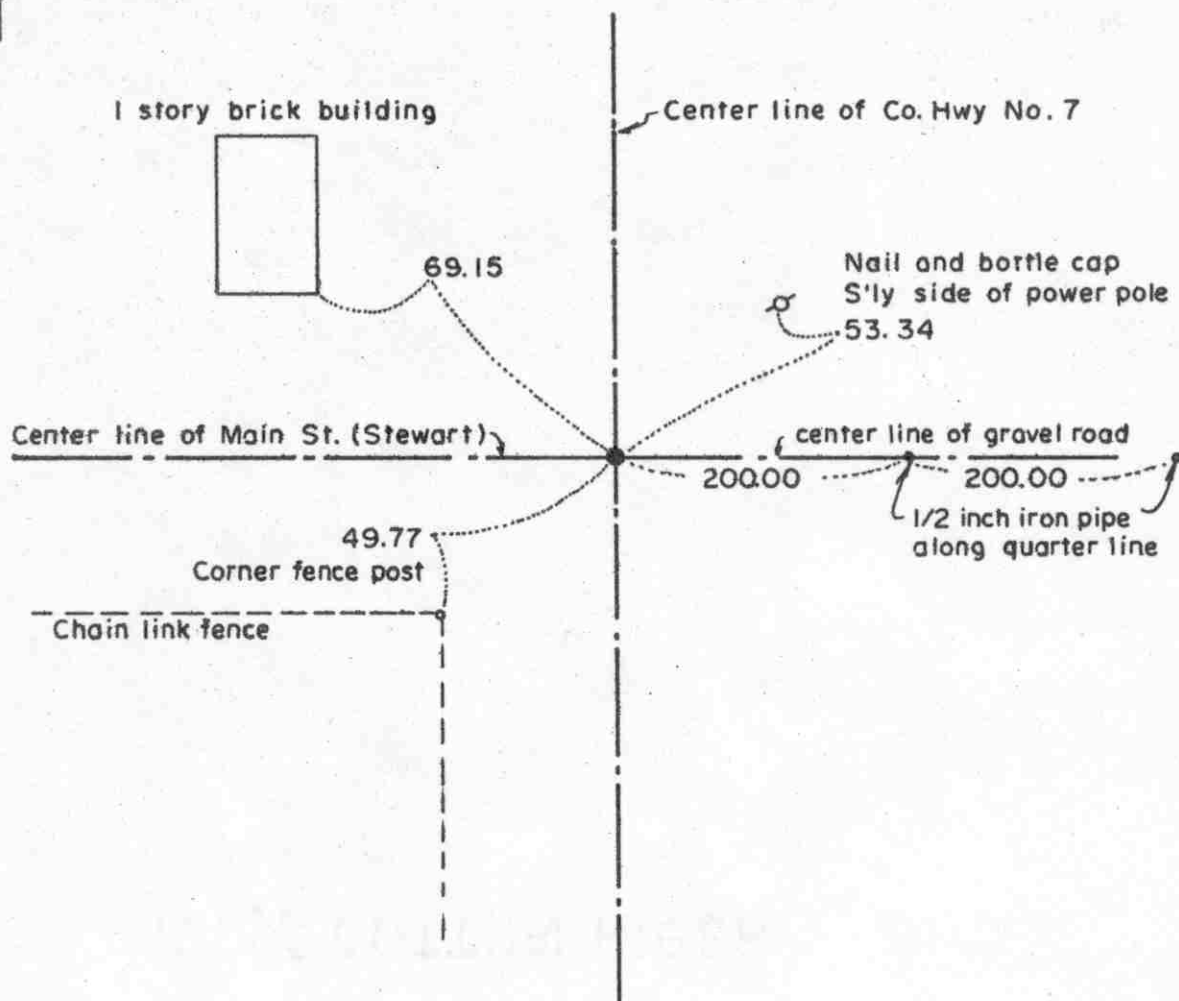
**Witness Corner:** A witness corner “stands in” when the true corner cannot be monumented or occupied because of difficult terrain or obstruction of the corner sight. The witness corner must be on the section line and is usually 5 or 10 chains away from the true corner.

**Meander Corner:** The intersection of a township, range, or section line and the banks of a navigable stream or meandering body of water.

EAST QUARTER corner, Section 31, Township 115 North, Range 30 West

# Certificate of Location of Government Corner

SKETCH OF REFERENCE TIES  
(NO SCALE)



Statement of evidence relative to this corner location on sheet 2

I hereby certify that this document  
was prepared by me or under my  
direct supervision.

Willard Pellinen

Willard Pellinen  
McLeod County Surveyor  
License No. 9626

Date 2/4/1989

OFFICE OF THE COUNTY RECORDER  
MCLEOD COUNTY, MINNESOTA.

I hereby certify that this document was filed in this  
office at 3 o'clock P.M. on the 9th day  
of Feb, 1989.

Carmen Costello, County Recorder  
By \_\_\_\_\_, Deputy

Document No. 226881

## *Certificate of Location of Government Corner*

This corner was established by Thomas Simpson of the Government Land Office in 1855. He set a post in a mound with trench, pits and charred stake and he planted osage orange seeds at the northeast and southwest corners of the mound.

In 1896, I.C.Christlieb resurveyed Collins Township and he set an iron monument at this corner.

On October 14, 1971, we found the monument set by Christlieb and took reference ties.

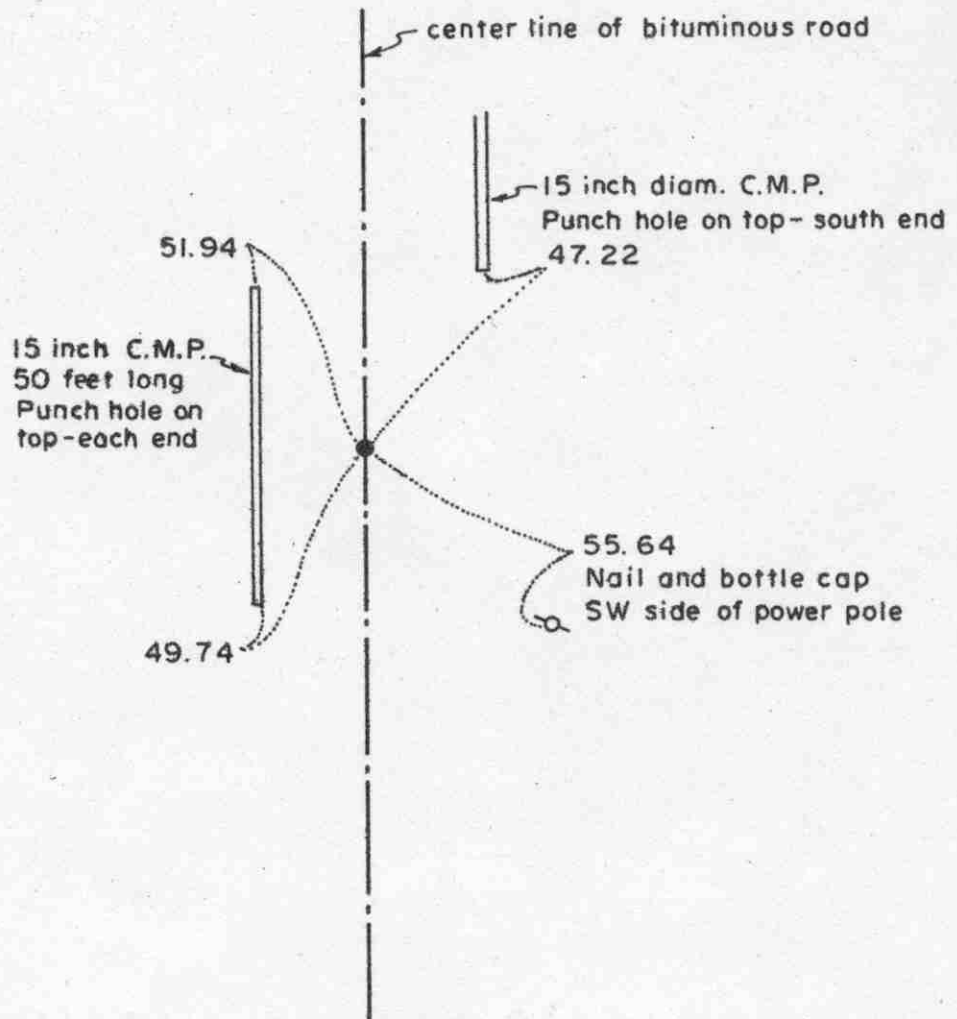
On April 11, 1987, we retied the monument and measured the east line of the Northeast Quarter of Section 31. We had a distance of 2678.24 feet compared to 2674.5 feet by Christlieb in 1895. Most of our measured distances in Collins Township are 3 to 7 feet longer than Christlieb's distances. We also turned an angle of 90 degrees 09 minutes 14 seconds from the northeast corner of Section 31 to the east quarter corner of Section 32.

On October 1, 1988, we set a railroad spike at the surface of the new bituminous and took new reference ties.

We feel the monument set by Christlieb in 1895 has perpetuated the true location of the east quarter corner.

NORTHEAST corner, Section 31, Township 115 North, Range 30 West

## Certificate of Location of Government Corner

SKETCH OF REFERENCE TIES  
(NO SCALE)Statement of evidence relative to this corner location on sheet 2

I hereby certify that this document  
was prepared by me or under my  
direct supervision.

Willard Pellinen

Willard Pellinen  
McLeod County Surveyor  
License No. 9626

Date 2/4/89

OFFICE OF THE COUNTY RECORDER  
MCLEOD COUNTY, MINNESOTA.

I hereby certify that this document was filed in this  
office at 3 o'clock P. M. on the 9th day  
of Feb., 19 89.

Carmen Jostine, County Recorder  
By \_\_\_\_\_, Deputy

Document No. 226880

Northeast corner, Section 31, Township 115 North, Range 30 West

## Certificate of Location of Government Corner

This corner was originally established by Thomas Simpson of the Government Land Office in 1855. He set a post, in a marsh, erected a mound with trench and pits and planted osage orange seeds at each angle of the mound.

In 1895, I.C.Christlieb resurveyed the Township of Collins and set an iron monument at this corner.

On May 15, 1974, we dug for the corner, John Tupa from Hutchinson, with a backhoe. We found the monument set by Christlieb ( $2\frac{1}{2}$  inches square iron monument, on top) down  $1\frac{1}{2}$  feet below the road surface. We took a photo and reference ties.

On May 28, 1974, we set a spike at the road surface and took additional reference ties.

On October 4, 1976, we set a McLeod County cast iron monument over the found monument.

On April 11, 1987 we retied the corner and measured the east line of the Southeast Quarter of Section 30. Our distance was 2672.80 compared with 2668 in 1895. Our distance for the Northeast Quarter (east line) of Section 31 was 2678.24 compared with 2674.5 by Christlieb.

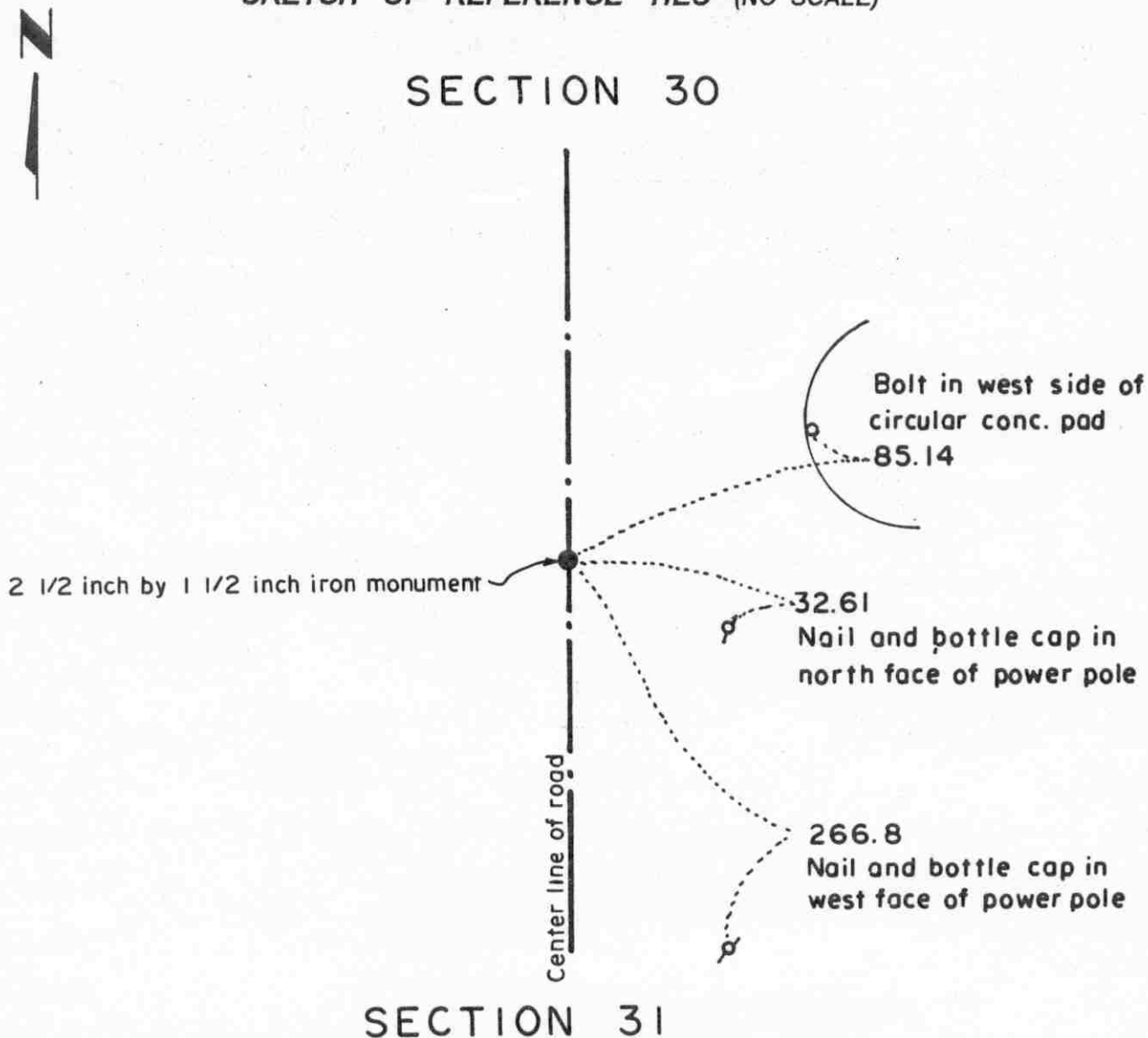
On October 11, 1988, we set a railroad spike at the surface of the new bituminous and took new reference ties.

We feel the monument set by Christlieb in 1895 has perpetuated the true location of the section corner.

# Certificate of Location of Government Corner

North Quarter corner, Section 31, Township 115 North, Range 30 West

SKETCH OF REFERENCE TIES (NO SCALE)



Statement of evidence relative to this corner location on sheet 2

I hereby certify that this document was prepared by me or under my direct supervision.

Willard Pellinen

Willard Pellinen  
McLeod County Surveyor  
License No. 9626.

Date Dec. 13, 1995

OFFICE OF THE COUNTY RECORDER  
MCLEOD COUNTY, MINNESOTA

I hereby certify that this document was filed in this office at 9 o'clock A M. on the 9th day of January 19 96.

Carmen Ostlie Mulder, County Recorder

By Charles Engelman, Deputy.

Document No. 270192

**Certificate of Location of Government Corner**  
**North Quarter corner, Section 31, Township 115 North, Range 30 West**

**1855. This corner was originally established by the General Land Office. Thomas Simpson set a post, at the east edge of a marsh, erected a mound with trench and pits, set a charred stake and planted osage orange seeds at the northeast and the southwest corners of the mound.**

**1896. I. C. Christlieb set a 1 1/2 inch by 2 1/2 inch iron monument at the corner.**

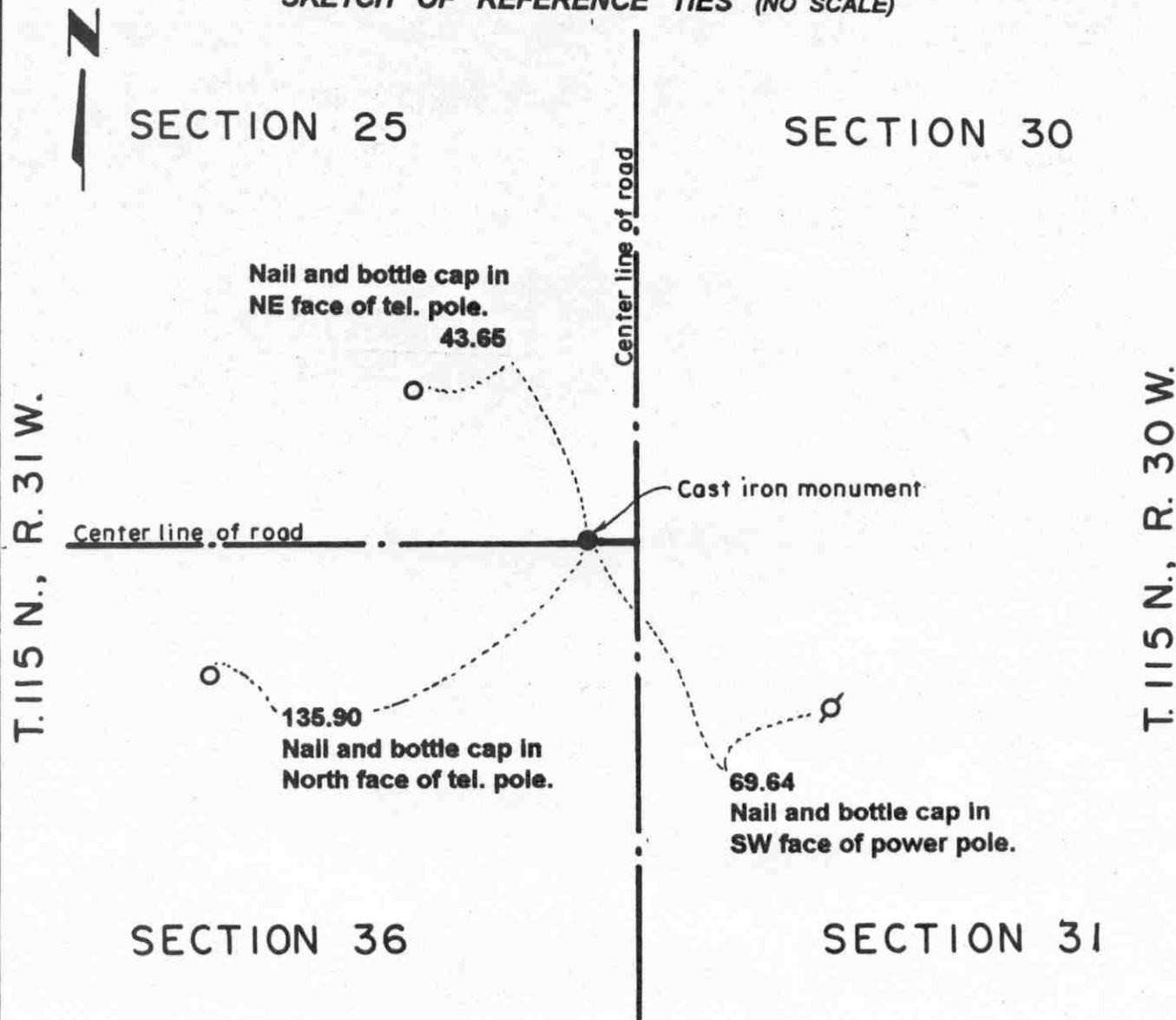
**February 25, 1976. Dickman Knutson, county surveyor, found the monument set by Christlieb and took available ties.**

**July 5, 1995. We found the monument in good condition and took new reference ties.**

# Certificate of Location of Government Corner

Northwest corner, Section 31, Township 115 North, Range 30 West

## SKETCH OF REFERENCE TIES (NO SCALE)



### Statement of evidence relative to this corner location on sheet 2

I hereby certify that this document was prepared by me or under my direct supervision.

Willard Pellinen  
Willard Pellinen  
McLeod County Surveyor  
License No. 9626.

Date Oct. 9, 1995

### OFFICE OF THE COUNTY RECORDER MCLEOD COUNTY, MINNESOTA

I hereby certify that this document was filed in this office at 9 o'clock A. M. on the 13th day of October 19 95.

(Armen) (Stellie) (Gulder), County Recorder

By \_\_\_\_\_, Deputy.

Document No. 268586



**Certificate of Location of Government Corner**  
**Northwest Corner, Section 31, Township 115 North, Range 30 West**

**1855. John Ryan of the General Land Office established this corner. He set a post, deposited charcoal, dug pits and trench, built mound and planted osage orange seeds at the corners of the mound.**

**June 28, 1967. Dickman Knutson, county surveyor, found an iron pin. He took reference ties and below the iron pin, 2 feet below the surface of the gravel road, he found a stone.**

**August 12, 1971. Knutson set a McLeod County cast iron monument.**

**August 18, 1981. We found the monument in good condition down 1 foot below the road surface and took new reference ties.**

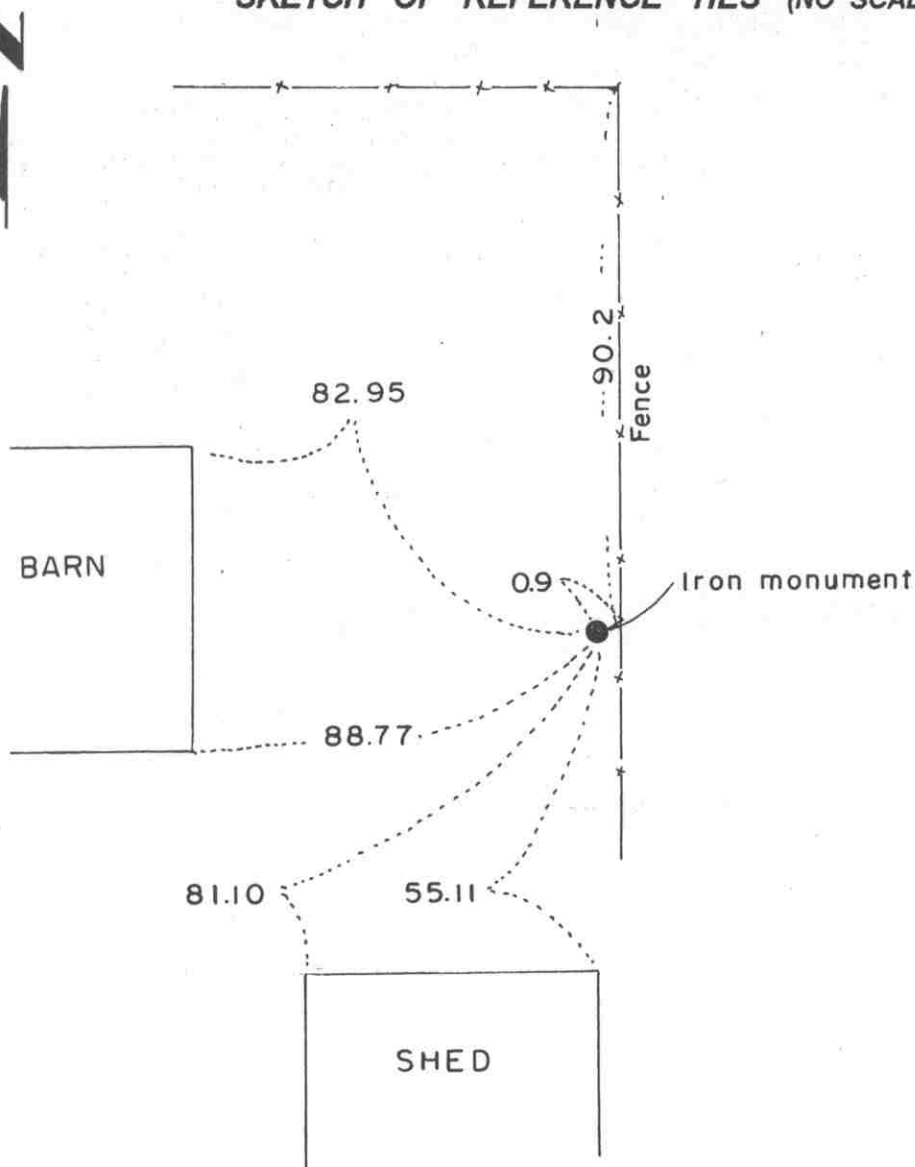
**April 28, 1995. We checked the reference ties.**

# Certificate of Location of Government Corner

West Quarter corner, Section 31, Township 115 North, Range 30 West

## SKETCH OF REFERENCE TIES (NO SCALE)

SECTION 36, T.115 N., R. 31 W.



SECTION 31, T.115 N., R. 30 W.

### Statement of evidence relative to this corner location on sheet 2

I hereby certify that this document was prepared by me or under my direct supervision.

Willard Pellinen

Willard Pellinen  
McLeod County Surveyor  
License No. 9626.

Date May 15, 1995

### OFFICE OF THE COUNTY RECORDER MCLEOD COUNTY, MINNESOTA

I hereby certify that this document was filed in this office at 9 o'clock A.M. on the 18th day of May 19 95.

Carmen Doolie Mulder, County Recorder

By \_\_\_\_\_, Deputy.

Document No. 265811

## ***Certificate of Location of Government Corner***

***West Quarter Corner, Section 31, Township 115 North, Range 30 West***

***1855. John Ryan of the General Land Office established this corner. He set a post, deposited charcoal, dug pits and trench, built mound and planted osage orange seeds at the corners of the mound.***

***1973. Dickman Knutson, county surveyor, set a temporary quarter corner using 1896 survey distances by I. C. Christlieb, surveyor.***

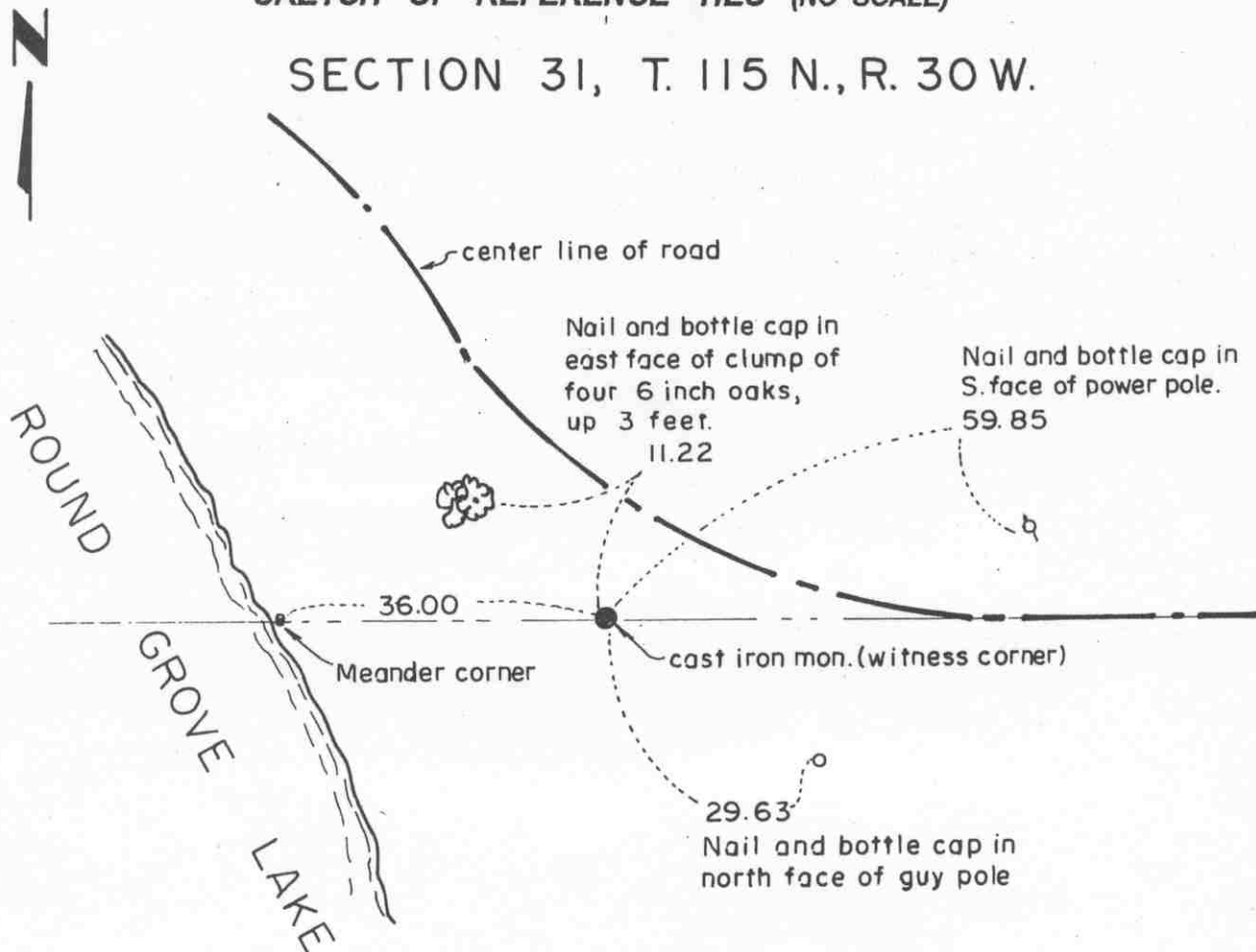
***August 29, 1984. We dug at the temporary quarter corner location and found an iron monument down 0.5 foot. Left the monument in place and took available reference ties.***

# Certificate of Location of Government Corner

MEANDER corner, Section 6, Township 114 North, Range 30 West

SKETCH OF REFERENCE TIES (NO SCALE)

SECTION 31, T. 115 N., R. 30 W.



SECTION 6, T. 114 N., R. 30 W

Statement of evidence relative to this corner location on sheet 2

I hereby certify that this document was prepared by me or under my direct supervision.

Willard Pellinen  
Willard Pellinen  
McLeod County Surveyor  
License No. 9626.

Date July 6, 1995

OFFICE OF THE COUNTY RECORDER  
MCLEOD COUNTY, MINNESOTA

I hereby certify that this document was filed in this office at 9 o'clock A. M. on the 18th day of July, 19 95.

Carmen Ostlie Rueder, County Recorder

By \_\_\_\_\_, Deputy.

Document No. 266992

## **Certificate of Location of Government Corner**

### **Meander Corner, Section 6, Township 114 North, Range 30 West**

*1855. John Ryan of the General Land Office originally established this corner. He set a post, deposited charcoal, dug pits and trench, built mound and planted osage orange seeds at the corners of the mound.*

*April, 1898. E. L. Higgins, county surveyor, found the meander corner, between Section 6, Township 114 North, Range 30 West, and Section 31, Township 115 North, Range 30 West.*

*September 6, 1972. Dickman Knutson, county surveyor, found a rotted wood post, 2 feet long, 3 inches square, down 2 feet below the surface. This was approximately 2042 feet west of the north quarter corner of Section 6. Government distance was 2042 feet. Knutson set a McLeod County cast iron monument in place of the found wood post and a McLeod County cast iron monument on top of the bank 36 feet east of the meander corner, along the north line of the Northwest Quarter of Section 6. The meander corner was 3 feet east of the lake shore. Knutson took reference ties to the meander corner.*

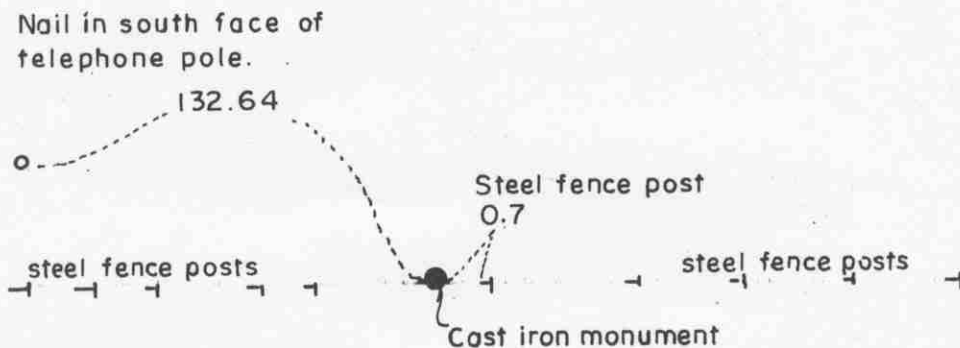
*February 16, 1995. We found the monument which is 36.00 feet east of the meander corner in good condition and took new reference ties.*

# Certificate of Location of Government Corner

NORTH QUARTER corner, Section 6, Township 114 North, Range 30 West

SKETCH OF REFERENCE TIES (NO SCALE)

SECTION 31, T. 115N., R. 30W



SECTION 6, T. 114 N., R. 30 W.

Statement of evidence relative to this corner location on sheet 2

I hereby certify that this document was prepared by me or under my direct supervision.

Willard Pellinen

Willard Pellinen  
McLeod County Surveyor  
License No. 9626.

Date May 15, 1995

OFFICE OF THE COUNTY RECORDER  
MCLEOD COUNTY, MINNESOTA

I hereby certify that this document was filed in this office at 9 o'clock A.M. on the 18th day of May, 19 95.

Carmen J. Mulder, County Recorder

By \_\_\_\_\_, Deputy.

Document No. 265801

## **Certificate of Location of Government Corner**

**North Quarter Corner, Section 6, Township 114 North, Range 30 West**

**1855. John Ryan of the General Land Office originally established this corner. He set a post, deposited charcoal, dug pits and trench, built mound and planted osage orange seeds at the corners of the mound.**

**1896. I. C. Christlieb, surveyor, set an iron monument at the corner. He measured 2640 feet to the northeast corner of Section 6 and 2046 feet to the meander corner west of this corner.**

**October 1, 1970. Dickman Knutson, county surveyor, found the monument set by Christlieb and replaced it with a McLeod County cast iron monument and took reference ties. Knutson measured 2641.75 feet to the northeast corner of Section 6 and 2042 feet to the meander corner.**

**February 16, 1995. We found the monument in good condition and took new reference ties.**

# Certificate of Location of Government Corner

NORTHEAST corner, Section 6, Township 114 North, Range 30 West

SKETCH OF REFERENCE TIES (NO SCALE)

T. 115 N. R. 30 W.

SECTION 31

SECTION 32

Center line of road

Cast iron monument

Center line of road

Nail and bottle cap in  
SE face of power pole.

55.42

55.31

Nail and bottle cap in north  
face of post by tel. ped.

Nail and bottle cap in  
east face of power pole. 311.01

SECTION 6

SECTION 5

T. 114 N.

R. 30 W.

Statement of evidence relative to this corner location on sheet 2

I hereby certify that this document  
was prepared by me or under my  
direct supervision.

Willard Pellinen  
Willard Pellinen  
McLeod County Surveyor  
License No. 9626.

Date May 15, 1995

OFFICE OF THE COUNTY RECORDER  
MCLEOD COUNTY, MINNESOTA

I hereby certify that this document was filed in this office at 9  
o'clock A.M. on the 18th day of May  
19 95.

Carmen Dottie Mulder, County Recorder

By \_\_\_\_\_, Deputy.

Document No. 265799



**Certificate of Location of Government Corner**  
**Northeast Corner, Section 6, Township 114 North, Range 30 West**

*1855. John Ryan of the General Land Office originally established this corner. He set a post, deposited charcoal, dug pits and trench, built mound and planted osage orange seeds at the corners of the mound.*

*1896. I. C. Christlieb, surveyor, set an iron monument 25 feet south and 1 foot east of the true corner.*

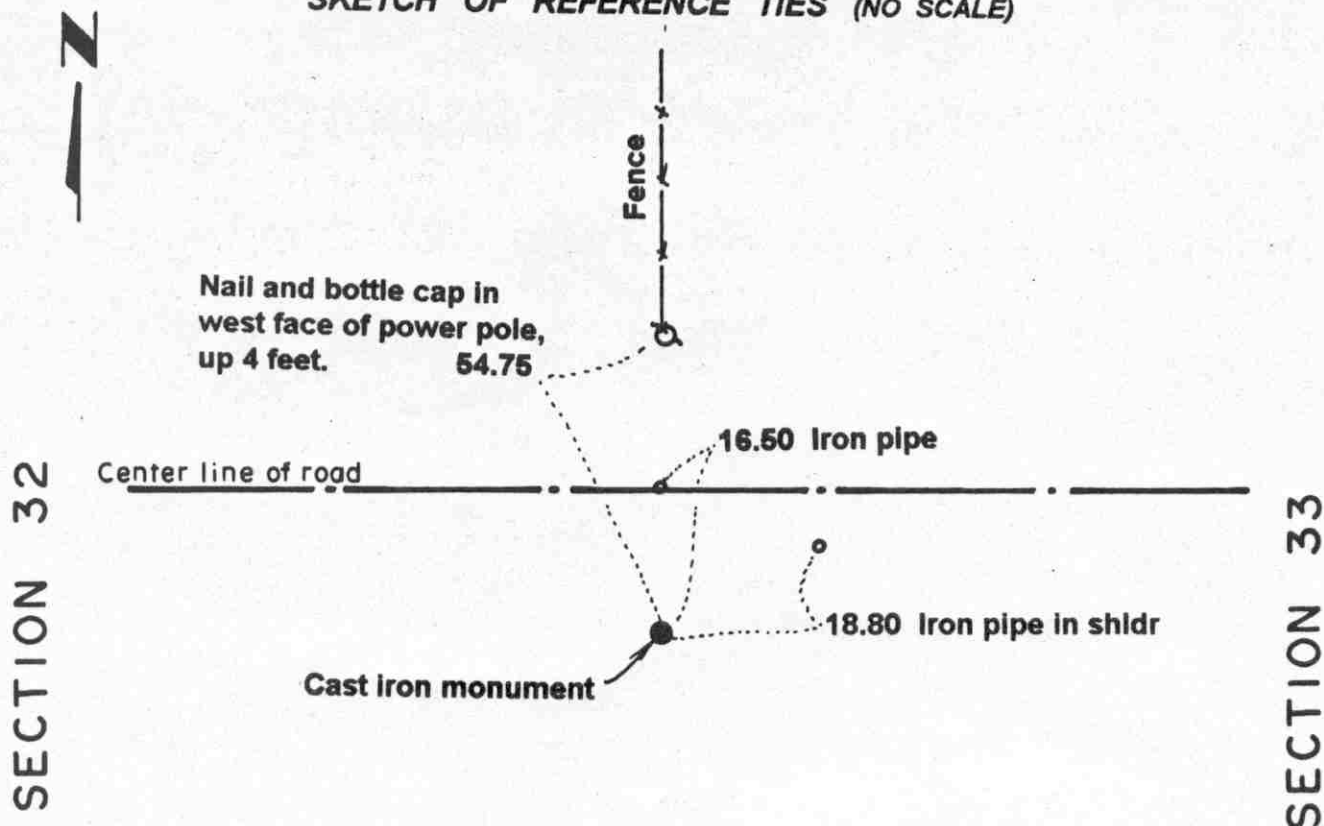
*November 2, 1970. Dickman Knutson, county surveyor, found the monument set by Christlieb and set a McLeod County cast iron monument 25 feet north and 1 foot west of the found monument and took reference ties. This fell on the center line intersection of roads north, south, east and west.*

*February 16, 1995. We checked the reference ties.*

# Certificate of Location of Government Corner

East Quarter corner, Section 32, Township 115 North, Range 30 West

## SKETCH OF REFERENCE TIES (NO SCALE)



### Statement of evidence relative to this corner location on sheet 2

I hereby certify that this document was prepared by me or under my direct supervision.

Willard Pellinen  
Willard Pellinen  
McLeod County Surveyor  
License No. 9626.

Date Oct. 9, 1995

### OFFICE OF THE COUNTY RECORDER MCLEOD COUNTY, MINNESOTA

I hereby certify that this document was filed in this office at 9 o'clock A. M. on the 13th day of October 19 95.

(Armin) (Notlin) (Gulder), County Recorder

By \_\_\_\_\_, Deputy.

Document No. 268587

**Certificate of Location of Government Corner**  
**East Quarter Corner, Section 32, Township 115 North, Range 30 West**

*August, 1855. Thomas Simpson of the General Land Office established this corner. He set a post, erected a mound with trench and pits, set a charred stake and planted osage orange seeds at the northeast and southwest corners of the mound.*

*1896. I. C. Christlieb, surveyor, set an iron monument at this corner.*

*May 1, 1980. We found the monument set by Christlieb in 1896. This was in the south ditch of an east-west road in line with a fence to the north and a field line to the south. We took available reference ties. The monument was down 3 feet below the surface. We set 2 half inch by 14 inch iron pipes over the monument.*

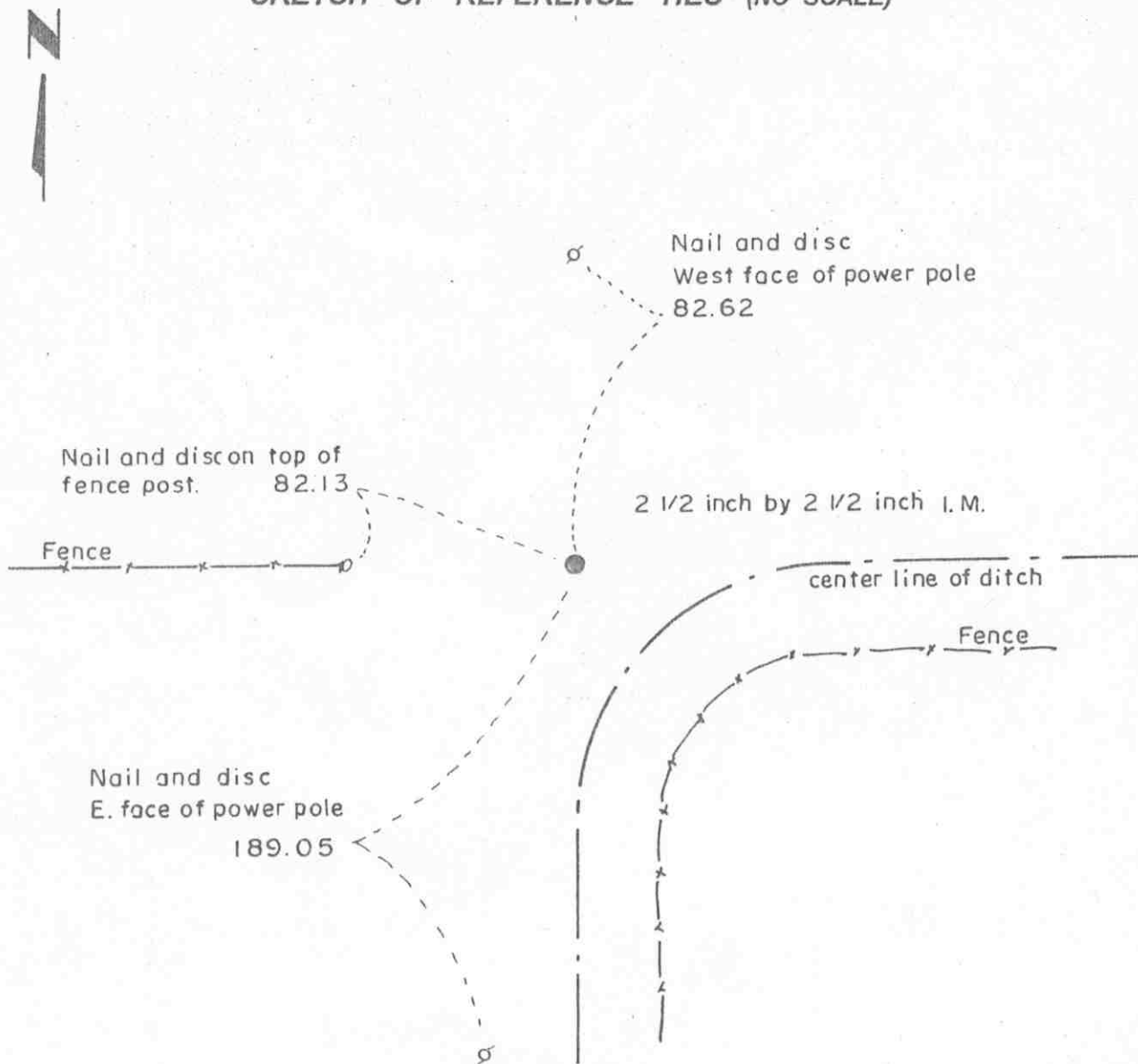
*July, 9, 1980. We set a McLeod County cast iron monument over the monument set by Christlieb.*

*April 28, 1995. We checked the reference ties.*

# Certificate of Location of Government Corner

NORTHEAST corner, Section 32, Township 115 North, Range 30 West

## SKETCH OF REFERENCE TIES (NO SCALE)



### Statement of evidence relative to this corner location on sheet 2

I hereby certify that this document was prepared by me or under my direct supervision.

Willard Pellinen

Willard Pellinen  
McLeod County Surveyor  
License No. 9626.

Date July 14, 1986

### OFFICE OF THE COUNTY RECORDER MCLEOD COUNTY, MINNESOTA

I hereby certify that this document was filed in this office at 9 o'clock A. M. on the 23rd day of January, 19 96.

Carmen Ostlie Mulder, County Recorder

By \_\_\_\_\_, Deputy.

Document No. 270527

# **Certificate of Location of Government Corner**

NORTHEAST corner, Section 32, Township 115 North, Range 30 West

August, 1855. Thomas Simpson of the General Land Office established this corner. He set a post, erected mound with trench and pits, set a charred stake and planted osage orange seeds at each angle.

1896. I. C. Christlieb, surveyor, remonumented Collins Township and set an iron monument at this corner.

March 13, 1974. Dickman Knutson, county surveyor, found the monument set in 1896 and took available reference ties.

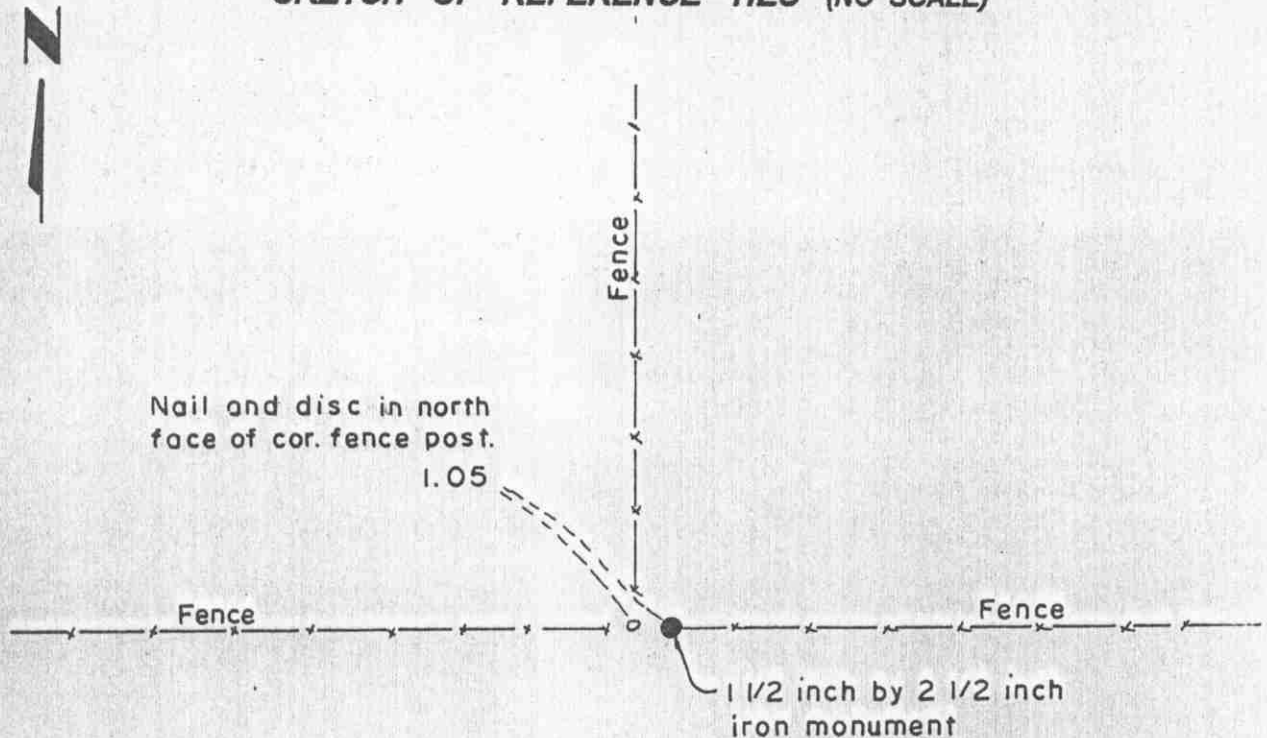
July, 1986. We found the monument and checked the reference ties.



# Certificate of Location of Government Corner

NORTH QUARTER corner, Section 32, Township 115 North, Range 30 West

## SKETCH OF REFERENCE TIES (NO SCALE)



### Statement of evidence relative to this corner location on sheet 2

I hereby certify that this document was prepared by me or under my direct supervision.

Willard Pellinen

Willard Pellinen  
McLeod County Surveyor  
License No. 9626.

Date July 14, 1986

### OFFICE OF THE COUNTY RECORDER MCLEOD COUNTY, MINNESOTA

I hereby certify that this document was filed in this office at 9 o'clock A.M. on the 23rd day of January 19 96.

Carmen Potliermulder, County Recorder

By \_\_\_\_\_, Deputy.

Document No. 270528

# **Certificate of Location of Government Corner**

**NORTH QUARTER** corner, **Section** 32, **Township** 115 **North, Range** 30 **West**

August, 1855. Thomas Simpson of the General Land Office established this corner. He set a post, erected mound with trench and pits, set a charred stake and planted osage orange seeds at the northeast and southwest corners of the mound.

1896. I. C. Christlieb, surveyor, remonumented Collins Township and set an iron monument at this corner.

March 26, 1974. Dickman Knutson, county surveyor, found the monument set in 1896 and took available reference ties.

# Certificate of Location of Government Corner

NORTH QUARTER corner, Section 5, Township 114 North, Range 30 West

SKETCH OF REFERENCE TIES (NO SCALE)



SECTION 32 T. 115 N., R. 30 W.

Field line

Nail and bottle cap in post  
by telephone pedestal.

43.75

Cast iron monument.

Center line of road

4

o

o

38.68

Top-center of  
drain tile.

55.03

Chiseled + on top of  
3 ft. by 2 ft. stone

Fence

SECTION 5, T. 114 N., R. 30 W.

Statement of evidence relative to this corner location on sheet 2

I hereby certify that this document  
was prepared by me or under my  
direct supervision.

Willard Pellinen  
Willard Pellinen  
McLeod County Surveyor  
License No. 9626.

Date May 15, 1995

OFFICE OF THE COUNTY RECORDER  
MCLEOD COUNTY, MINNESOTA

I hereby certify that this document was filed in this office at 9  
o'clock A. M. on the 18th day of May,  
19 95.

Carmen (Dellie) Mulder, County Recorder

By \_\_\_\_\_, Deputy.

Document No. 265798



## **Certificate of Location of Government Corner**

### **North Quarter Corner, Section 5, Township 114 North, Range 30 West**

**1855.** John Ryan of the General Land Office originally established this corner. He set a post, deposited charcoal, dug pits and trench, built mound and planted osage orange seeds at the corners of the mound.

**1931.** Field notes by Carlisle Madson, surveyor, show a stone at the corner, on the south side of grade.

**1970.** Lloyd Penk, 56 years old, area resident all his life, said when road was rebuilt a stone was found near the center line of the east-west road.

**October 3, 1970.** Dickman Knutson, county surveyor, excavated for the corner. (John Tupa from Hutchinson with a backhoe) They found a stone, 10 inches in diameter, 2 feet long, with a sharp point up, about 4 feet south of the center line. They took available reference ties.

**October 13, 1970.** Knutson set a McLeod County cast iron monument and took additional ties.

**February 16, 1995.** We checked the reference ties.

# Certificate of Location of Government Corner

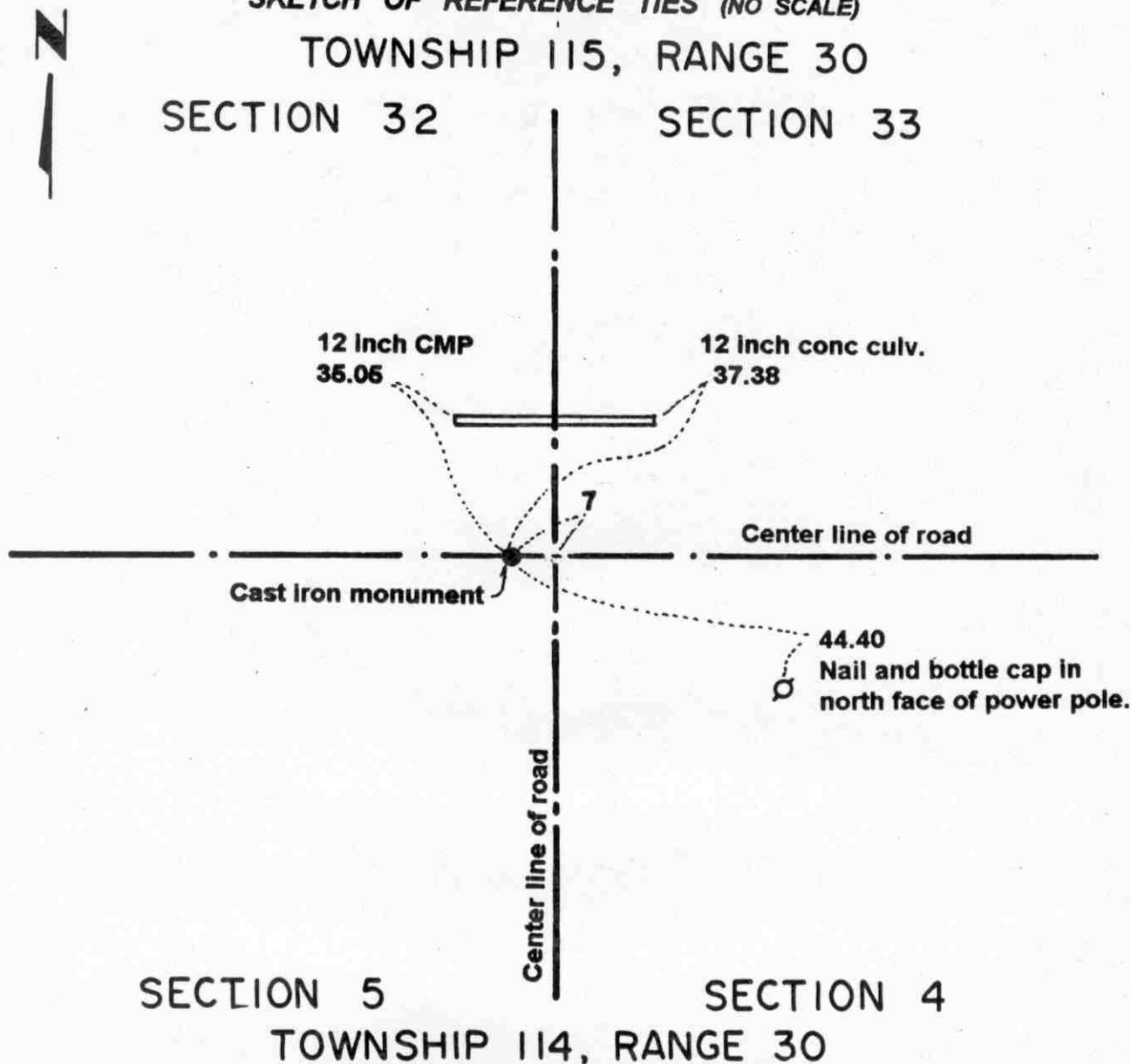
NORTHEAST corner, Section 5, Township 114 North, Range 30 West

SKETCH OF REFERENCE TIES (NO SCALE)

TOWNSHIP 115, RANGE 30

SECTION 32

SECTION 33



SECTION 5

SECTION 4

TOWNSHIP 114, RANGE 30

Statement of evidence relative to this corner location on sheet 2

I hereby certify that this document was prepared by me or under my direct supervision.

Willard Pellinen

Willard Pellinen  
McLeod County Surveyor  
License No. 9626.

Date Nov. 6, 1995

OFFICE OF THE COUNTY RECORDER  
MCLEOD COUNTY, MINNESOTA

269319

I hereby certify that this document was filed in this office at 9 o'clock A.M. on the 14th day of November 19 95.

Carmen Estelle Mulder, County Recorder

By \_\_\_\_\_, Deputy.

Document No. \_\_\_\_\_

**Certificate of Location of Government Corner**  
**Northeast Corner, Section 5, Township 114 North, Range 30 West**

**1855. John Ryan of the General Land Office originally established this corner. He set a post, deposited charcoal, dug pits and trench, built mound and planted osage orange seeds at the corners of the mound.**

**1896. I. C. Christlieb, surveyor, set a 3 inch by 3 inch iron monument at the corner.**

**October 26, 1970. Dickman Knutson, county surveyor, excavated for the corner. (John Tupa from Hutchinson with a backhoe) Down 3 feet below the surface of the road they found the monument set by Christlieb. They took reference ties. The monument was on the center line of the east-west road about 7 feet west of the center line of the north-south road.**

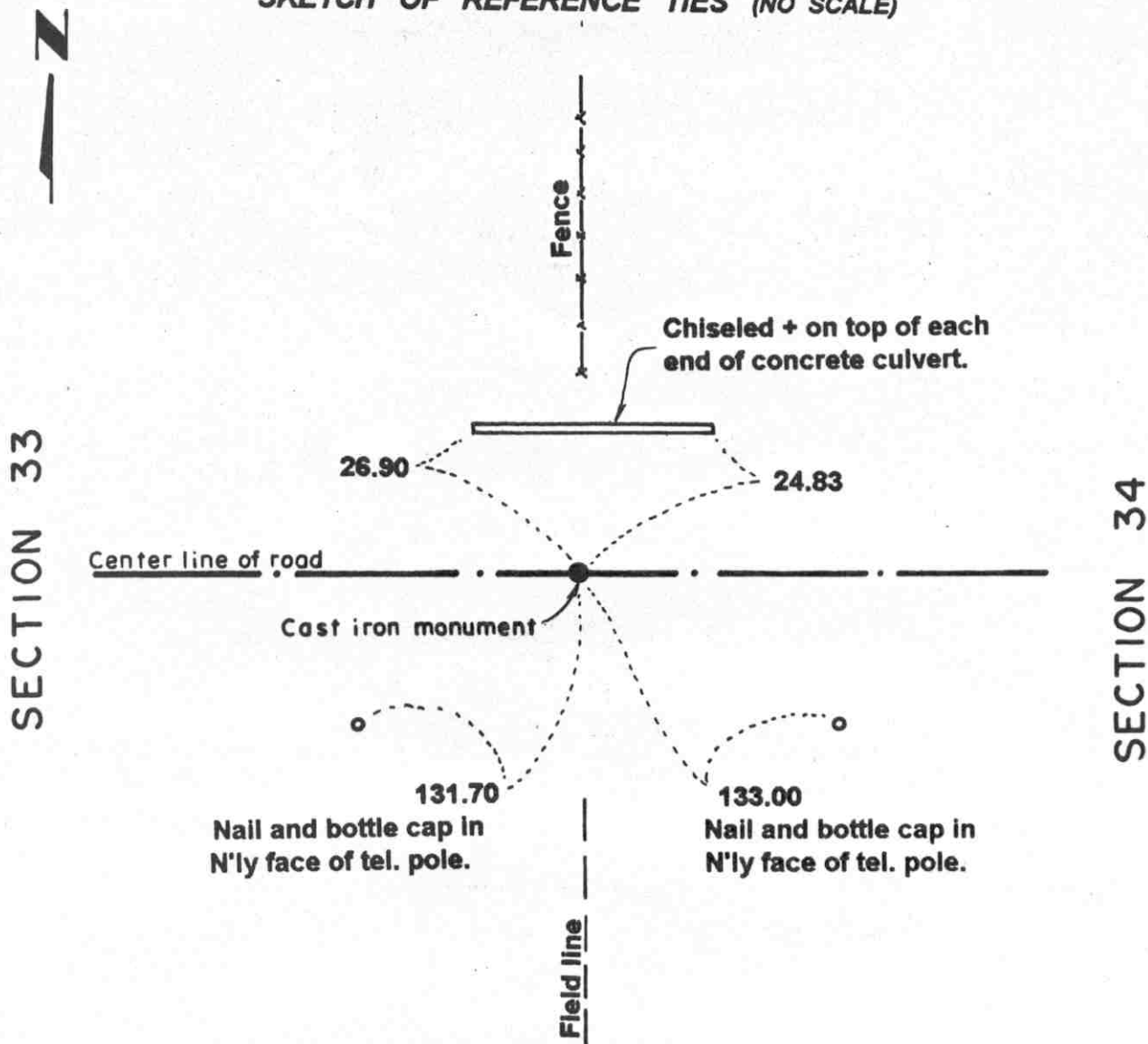
**1970. Knutson set a McLeod County cast iron monument over the found monument.**

**April 28, 1995. We checked the reference ties.**

# Certificate of Location of Government Corner

East Quarter corner, Section 33, Township 115 North, Range 30 West

## SKETCH OF REFERENCE TIES (NO SCALE)



### Statement of evidence relative to this corner location on sheet 2

I hereby certify that this document was prepared by me or under my direct supervision.

Willard Pellinen  
Willard Pellinen  
McLeod County Surveyor  
License No. 9626.

Date Oct. 9, 1995

### OFFICE OF THE COUNTY RECORDER MCLEOD COUNTY, MINNESOTA

I hereby certify that this document was filed in this office at 9 o'clock A. M. on the 13th day of October 19 95.

Carmen J. J. J. J., County Recorder

By \_\_\_\_\_, Deputy.

Document No. 268588

**Certificate of Location of Government Corner**  
**East Quarter Corner, Section 33, Township 115 North, Range 30 West**

**August, 1855. Thomas Simpson of the General Land Office established this corner. He set a post, erected a mound with trench and pits, set a charred stake and planted osage orange seeds at the northeast and southwest corners of the mound.**

**1896. I. C. Christlieb, surveyor, set an iron monument at this corner.**

**May 27, 1981. We found the 2 1/2 inch by 1 1/2 inch iron monument set by Christlieb. This was in the center of the east-west road in line with a fence to the north and a field line to the south. We took available reference ties.**

**April 28, 1995. We checked the reference ties.**

# Certificate of Location of Government Corner

Northeast corner, Section 33, Township 115 North, Range 30 West

SKETCH OF REFERENCE TIES (NO SCALE)



SECTION 28

SECTION 27

Nail and disc on north  
face of corner fence post.

1.75

16.10 Steel fence post

Fence

Fence

Square iron monument

10.20

Nail and disc on east  
face of fence post.

SECTION 33

SECTION 34

Fence

Statement of evidence relative to this corner location on sheet 2

I hereby certify that this document  
was prepared by me or under my  
direct supervision.

Willard Pellinen  
Willard Pellinen  
McLeod County Surveyor  
License No. 9626.

Date Dec. 13, 1991

OFFICE OF THE COUNTY RECORDER  
MCLEOD COUNTY, MINNESOTA

I hereby certify that this document was filed in this office at 9  
o'clock A. M. on the 9th day of January  
19 96.

Carmen Ostlie Mulder, County Recorder

By Charles Engelmann, Deputy.

Document No. 270193

**Certificate of Location of Government Corner**  
**Northeast Corner, Section 33, Township 115 North, Range 30 West**

**August, 1855. Thomas Simpson of the General Land Office established this corner. He set a post, erected a mound, with trench and pits and charred stake and planted osage orange seeds at each angle.**

**1896. I. C. Christlieb, surveyor, set a square iron monument at the corner.**

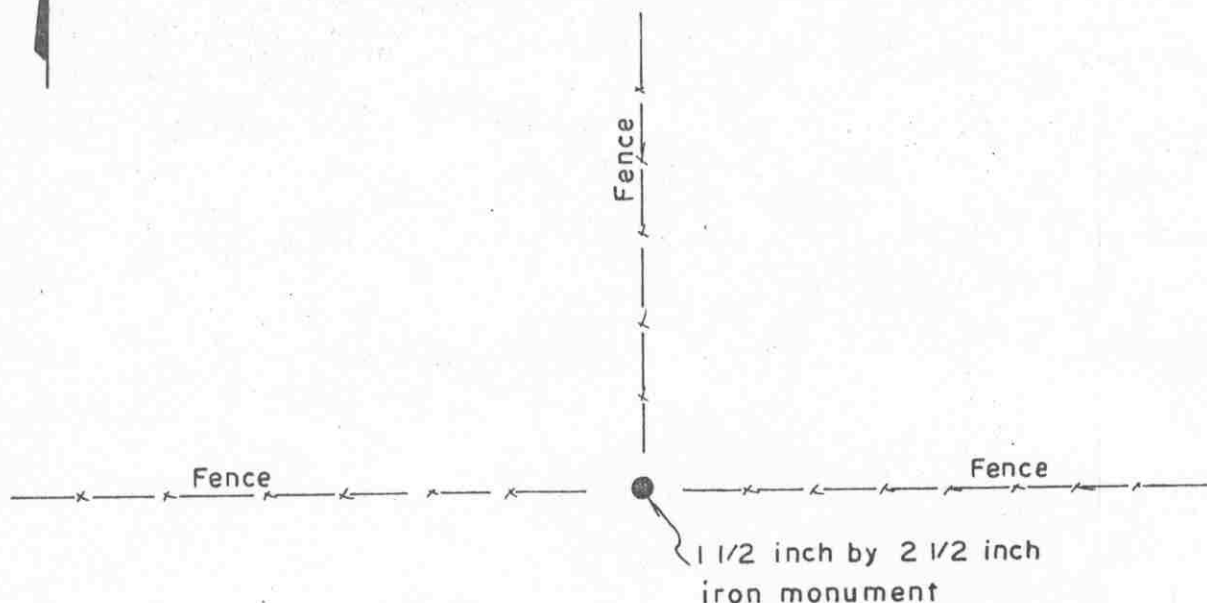
**March 25, 1974. Dickman Knutson, county surveyor, found the iron monument set by Christlieb and took available reference ties.**

# Certificate of Location of Government Corner

North Quarter corner, Section 33, Township 115 North, Range 30 West

SKETCH OF REFERENCE TIES (NO SCALE)

SECTION 28



SECTION 33

Statement of evidence relative to this corner location on sheet 2

I hereby certify that this document was prepared by me or under my direct supervision.

Willard Pellinen  
Willard Pellinen  
McLeod County Surveyor  
License No. 9626.

Date July 10, 1994.

OFFICE OF THE COUNTY RECORDER  
MCLEOD COUNTY, MINNESOTA

I hereby certify that this document was filed in this office at 9 o'clock A. M. on the 23rd day of January, 19 96.

Carmin Potlie Mulder, County Recorder

By \_\_\_\_\_, Deputy.

Document No. 270529



## ***Certificate of Location of Government Corner***

***North Quarter Corner, Section 33, Township 115 North, Range 30 West***

***August, 1855. Thomas Simpson of the General Land Office established this corner. He set a post, erected a mound with trench and pits, set a charred stake and planted osage orange seeds at the northeast and southwest corners of the mound.***

***1896. I. C. Christlieb, surveyor, set an iron monument at this corner.***

***March 26, 1974. Dickman Knutson, county surveyor, found the monument set by Christlieb in 1896 down 6 inches below the surface. This was at the intersection of fences north, east and west.***

# Certificate of Location of Government Corner

NORTH QUARTER corner, Section 4, Township 114 North, Range 30 West

SKETCH OF REFERENCE TIES (NO SCALE)

SECTION 33, T.115 N., R. 30 W.



Fence

Nail and bottle cap in  
east face of fence post.  
28.26

Center line of road

3  
Cast iron monument

46.50  
Nail and bottle cap in  
north face of power pole.

SECTION 4, T. 114 N., R. 30 W.

Statement of evidence relative to this corner location on sheet 2

I hereby certify that this document  
was prepared by me or under my  
direct supervision.

Willard Pellinen

Willard Pellinen  
McLeod County Surveyor  
License No. 9626.

Date May 15, 1995

OFFICE OF THE COUNTY RECORDER  
MCLEOD COUNTY, MINNESOTA

I hereby certify that this document was filed in this office at 9  
o'clock A. M. on the 18th day of May,  
19 95.

Carmen Ostlie & Gulder, County Recorder

By \_\_\_\_\_, Deputy.

Document No. 265796

## ***Certificate of Location of Government Corner***

***North Quarter Corner, Section 4, Township 114 North, Range 30 West***

***1855. John Ryan of the General Land Office originally established this corner. He set a post, deposited charcoal, dug pits and trench, built mound and planted osage orange seeds at the corners of the mound.***

***1896. I. C. Christlieb, surveyor, set an iron monument at the corner.***

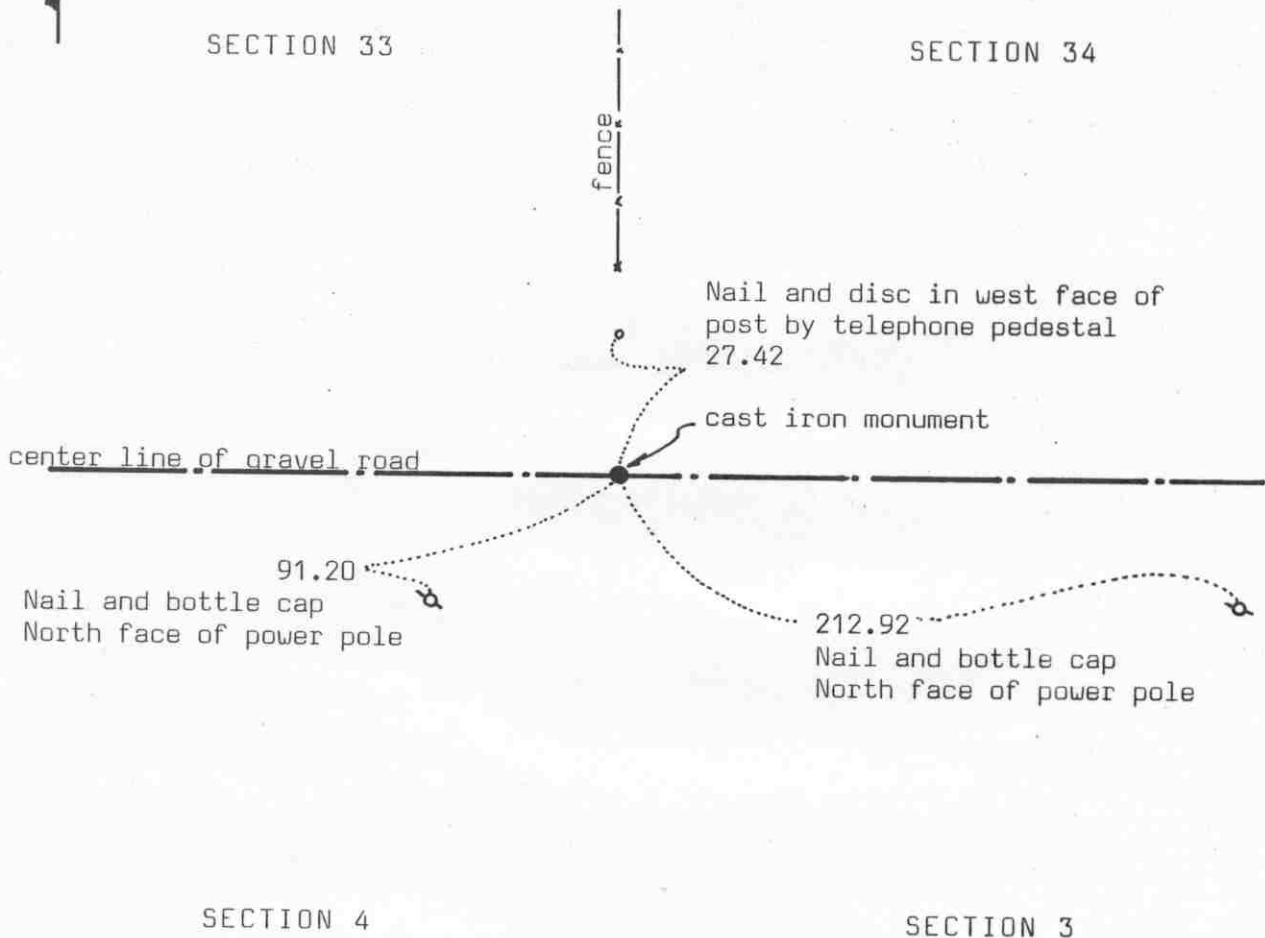
***1970. Dickman Knutson, county surveyor, found the monument set by Christlieb and replaced it with a McLeod County cast iron monument and took reference ties. This was about 3 feet south of the center of the east-west road.***

***February 16, 1995. We checked the referenct ties.***

NORTHEAST corner, Section 4, Township 114 North, Range 30 West

# Certificate of Location of Government Corner

## SKETCH OF REFERENCE TIES (NO SCALE)



### Statement of evidence relative to this corner location on sheet 2

I hereby certify that this document was prepared by me or under my direct supervision.

Willard Pellinen

Willard Pellinen  
McLeod County Surveyor  
License No. 9626

Date Jan 12, 1991

### OFFICE OF THE COUNTY RECORDER MCLEOD COUNTY, MINNESOTA.

I hereby certify that this document was filed in this office at 9 o'clock A. M. on the 22nd day of Jan 1991.

Carmen Oetke, County Recorder

By \_\_\_\_\_, Deputy

Document No. 237197

NORTHEAST corner, Section 4, Township 114 North, Range 30 West

## *Certificate of Location of Government Corner*

1855. This corner was established by the General Land Office. John Ryan set a post, deposited charcoal, dug pits and trench, built mound and planted osage orange seeds at the corners of the mound.

August, 1898. Survey field notes by E.L.Higgins show a distance of 2669.5 feet to the east quarter corner of Section 4. He doesn't show what was set or found at the section corner, but shows an iron post 5 feet north of the corner.

February 20, 1970. McCombs Knutson Associates (Dickman Knutson, county surveyor) talked with Mr Pikal who had lived in the northwest quarter of Section 3 all his life. Mr. Pikal was over 80 years old. He said there was a square iron marker at the corner, in line with the fence running north.

Knutson dug for the corner and found the iron and replaced it with a McLeod County cast iron monument and took reference ties.

November 20, 1989. We found the monument in good condition down 6 inches below the road surface. We took new reference ties.

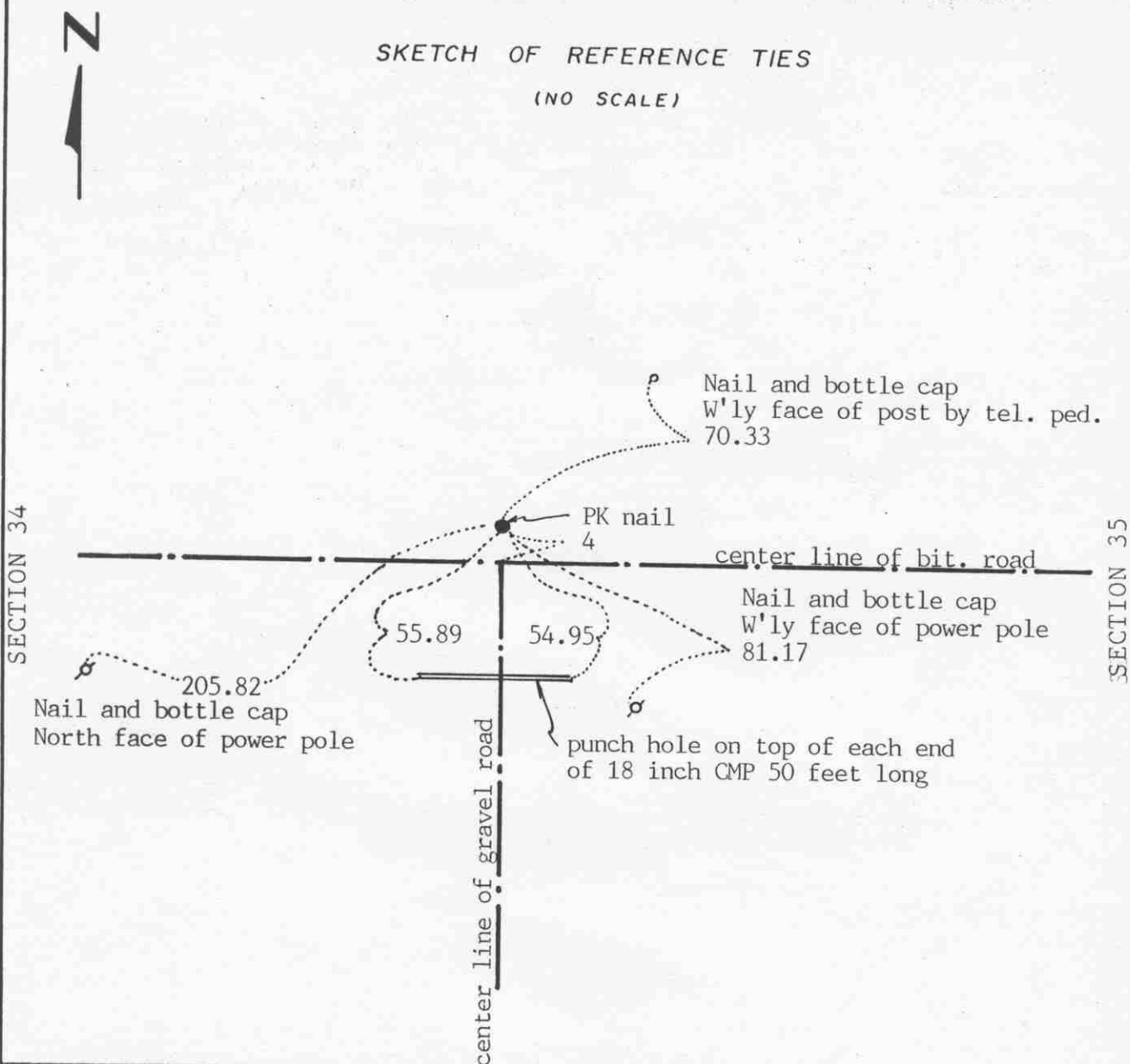
November 22, 1989. We measured the east line of Section 4 and had a distance of 2669.54 feet from the northeast corner to the east quarter corner compared with 2669.5 by Higgins in 1898.

We accept the iron monument found by Knutson and later the cast iron monument set by Knutson as having perpetuated the correct location of the section corner.

EAST QUARTER corner, Section 34, Township 115 North, Range 30 West

# Certificate of Location of Government Corner

SKETCH OF REFERENCE TIES  
(NO SCALE)



Statement of evidence relative to this corner location on sheet 2

I hereby certify that this document was prepared by me or under my direct supervision.

Willard Pellinen

Willard Pellinen  
McLeod County Surveyor  
License No. 9626

Date Jan 27, 1991

OFFICE OF THE COUNTY RECORDER  
MCLEOD COUNTY, MINNESOTA.

I hereby certify that this document was filed in this office at 1:30 o'clock P.M. on the 4th day of Feb, 1991.

Carmen Ostlie, County Recorder

By \_\_\_\_\_, Deputy

Document No. 237404

EAST QUARTER corner, Section 34, Township 115 North, Range 30 West

## Certificate of Location of Government Corner

August, 1855. Thomas Simpson of the General Land Office established this corner. He set a post in mound with trench, pits, charred stake and planted osage orange seeds at the northeast and southwest corners of the mound.

1896. I.C.Christlieb, county surveyor, set an iron monument at the corner. This has been destroyed by Highway No. 212 construction.

Highway 212 right of way plans show the corner to be 4 feet north of the center line. Railroad plans show this corner to be 406 feet north of the center line of the railroad.

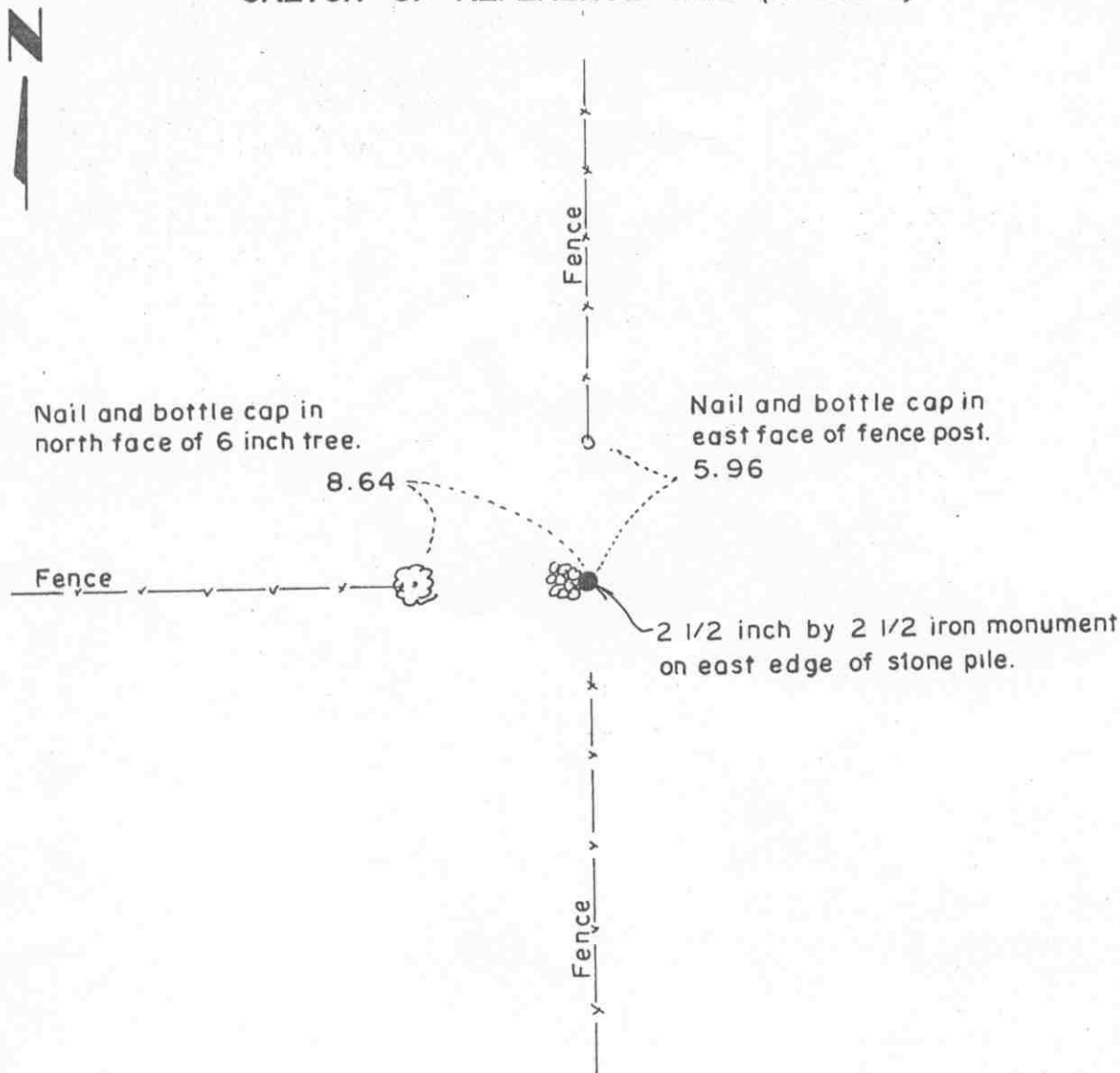
February 12, 1985. We set a PK nail at the location shown on the Highway right of way plans. This also falls 406 feet north of the center line of the railroad, as shown on the railroad right of way plans. We took available reference ties.

January 3, 1990. We found the PK nail and the reference ties good.

# Certificate of Location of Government Corner

NORTHEAST corner, Section 34, Township 115 North, Range 30 West

## SKETCH OF REFERENCE TIES (NO SCALE)



### Statement of evidence relative to this corner location on sheet 2

I hereby certify that this document was prepared by me or under my direct supervision.

Willard Pellinen  
Willard Pellinen  
McLeod County Surveyor  
License No. 9626.

Date Jan 4, 1989

### OFFICE OF THE COUNTY RECORDER MCLEOD COUNTY, MINNESOTA

I hereby certify that this document was filed in this office at 9 o'clock A M. on the 23rd day of January 19 96.

Carmen Ostlie Mulder, County Recorder

By \_\_\_\_\_, Deputy.

Document No. 270530



# Certificate of Location of Government Corner

NORTHEAST corner, Section 34, Township 115 North, Range 30 West

August, 1855. Thomas Simpson of the General Land Office established this corner. He set a post, erected a mound, with trench and pits, set a charred stake and planted osage orange seeds at each angle.

1896. I. C. Christlieb, surveyor, remonumented Collins Township and set a 2 1/2 inch by 2 1/2 inch iron monument at this corner.

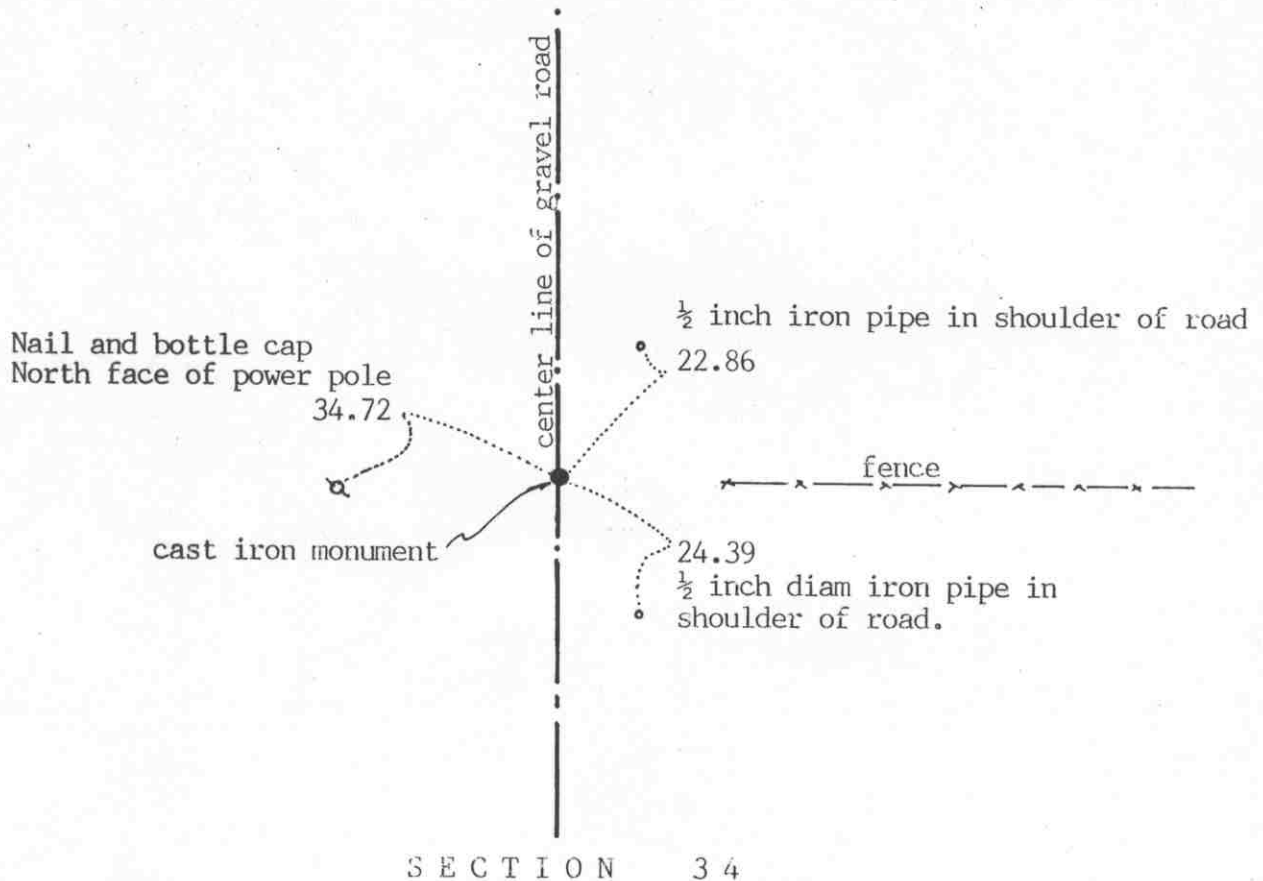
May 27, 1981. We found the iron monument set by Christlieb down 12 inches below the surface at the intersection of fences north, south and west and took available reference ties.

NORTH QUARTER corner, Section 34, Township 115 North, Range 30 West

## Certificate of Location of Government Corner

SKETCH OF REFERENCE TIES  
(NO SCALE)

SECTION 27



SECTION 34

Statement of evidence relative to this corner location on sheet 2

I hereby certify that this document  
was prepared by me or under my  
direct supervision.

Willard Pellinen

Willard Pellinen  
McLeod County Surveyor  
License No. 9626

Date January 25, 1992

OFFICE OF THE COUNTY RECORDER  
MCLEOD COUNTY, MINNESOTA.

I hereby certify that this document was filed in this  
office at 9 o'clock A.M. on the 30th day  
of January, 1992.

Carmen O'Brien, County Recorder

By \_\_\_\_\_, Deputy

Document No. 243118

NORTH QUARTER corner, Section 34, Township 115 North, Range 30 West***Certificate of Location of Government Corner***

August, 1855. Thomas Simpson of the General Land Office set a post in a mound with trench, pits and charred stake and he planted osage orange seeds at the northeast and southwest corners of the mound.

1895. I. C. Christlieb, county surveyor, set a 2½ inch by 1½ inch by 4 foot long iron monument at the corner.

May 14, 1927. Carlisle Madson, Sr., county surveyor, found the monument set by Christlieb.

June 5, 1979. We found the monument , leaning to one side, and we replaced it with a McLeod County cast iron monument and took reference ties.

Jarch 14, 1991. We found the monument in good condition but all reference ties destroyed. We took new available ties.

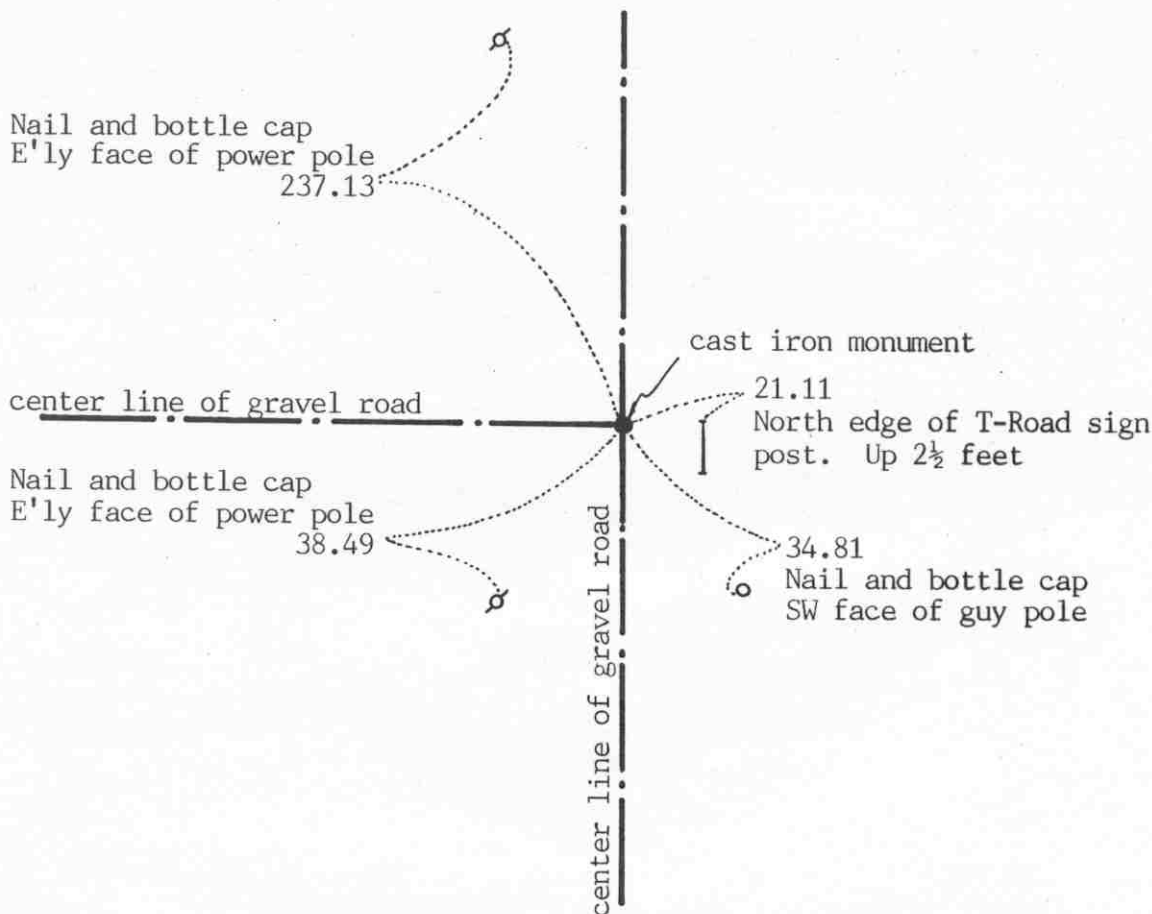
We accept the monument set by Christlieb as having perpetuated the correct location of the quarter corner.

NORTH QUARTER corner, Section 3, Township 114 North, Range 30 West

# Certificate of Location of Government Corner

## SKETCH OF REFERENCE TIES (NO SCALE)

SECTION 34, T115, R30



SECTION 3, T114, R30

Statement of evidence relative to this corner location on sheet 2

I hereby certify that this document was prepared by me or under my direct supervision.

Willard Pellinen

Willard Pellinen  
McLeod County Surveyor  
License No. 9626

Date Jan. 12, 1991

OFFICE OF THE COUNTY RECORDER  
MCLEOD COUNTY, MINNESOTA.

I hereby certify that this document was filed in this office at 9 o'clock A.M. on the 22nd day of Jan, 19 91.

Carmin Helie, County Recorder

By \_\_\_\_\_, Deputy

Document No. 237196

NORTH QUARTER corner, Section 3, Township 114 North, Range 30 West

### *Certificate of Location of Government Corner*

This corner was established by the General Land Office in 1855. John Ryan set a post, deposited charcoal, dug pits and trench, built mound and planted osage orange seeds at the corners of the mound.

February 18, 1970. Gust Jerke, has lived in the Southeast Quarter of Section 34 for 35 years said there is a stone at corner at the center line intersection of the roads.

October 3, 1970. McCombs Knutson Associates (Dickman Knutson, county surveyor) dug for the corner, John Tupa from Hutchinson with a backhoe. Down 2 feet below the road surface they found a stone, 1 foot by 1 foot by 2 feet long, set on end. They took available reference ties.

October 13, 1970. Knutson set a McLeod County cast iron monument at the corner.

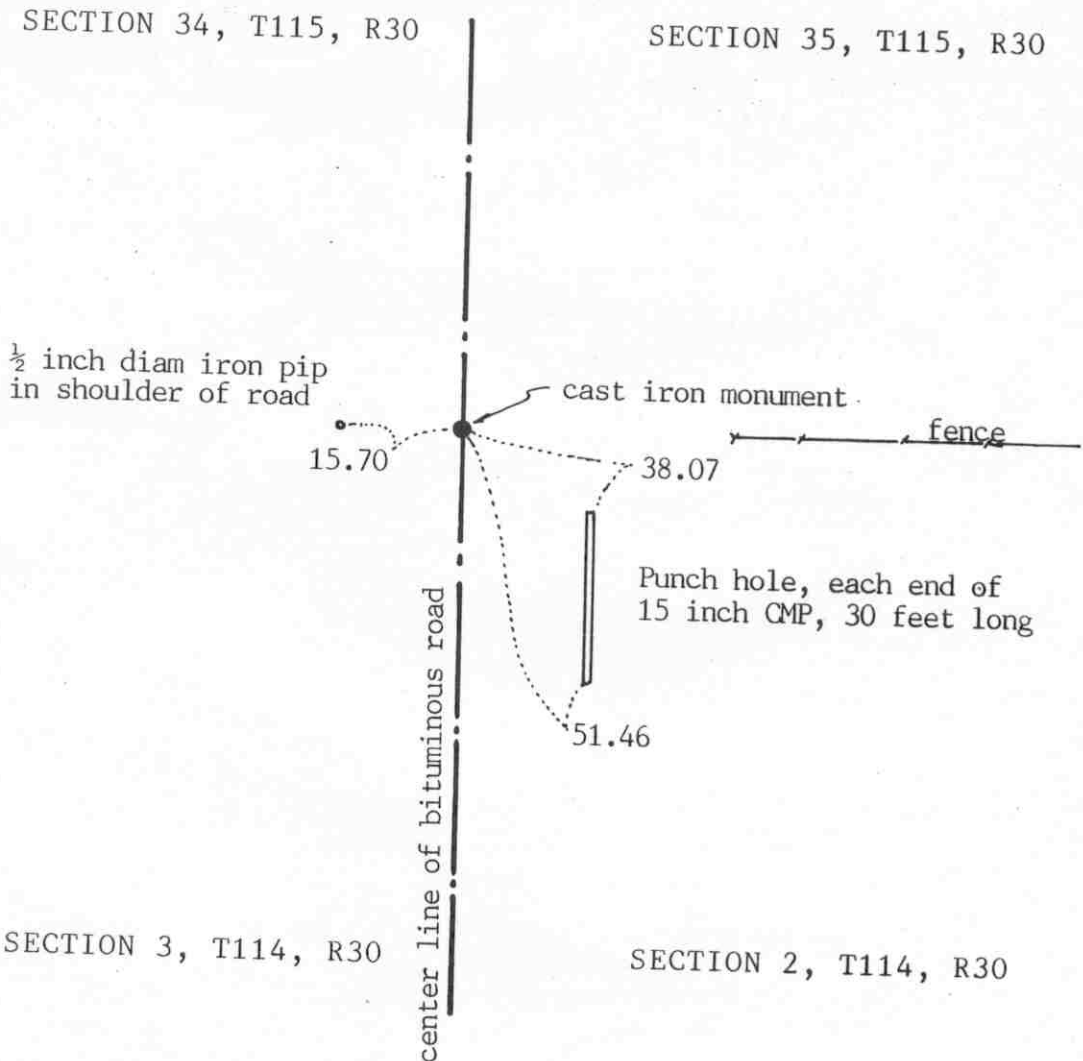
November 20, 1989. We found the monument in good condition down 12 inches below the road surface. We took new reference ties.

We accept the found stone monument as having perpetuated the correct location of the quarter corner.

NORTHEAST corner, Section 3, Township 114 North, Range 30 West

# Certificate of Location of Government Corner

SKETCH OF REFERENCE TIES  
(NO SCALE)



Statement of evidence relative to this corner location on sheet 2

I hereby certify that this document was prepared by me or under my direct supervision.

Willard Pellinen

Willard Pellinen  
McLeod County Surveyor  
License No. 9626

Date Jan. 12, 1991

OFFICE OF THE COUNTY RECORDER  
MCLEOD COUNTY, MINNESOTA.

I hereby certify that this document was filed in this office at 9 o'clock A.M. on the 22nd day of Jan, 19 91.

Carmen Ostlie, County Recorder

By \_\_\_\_\_, Deputy

Document No. 237194

NORTHEAST corner, Section 3, Township 114 North, Range 30 West

## *Certificate of Location of Government Corner*

This corner was originally established by the government in 1855. John Ryan set a post, deposited charcoal, dug pits and trench, built mound and planted osage orange seeds at the corners of the mound.

1896. I.C.Christlieb set an iron monument, 2½ inches square, 3 feet long at the corner.

October 26, 1970. McCombs Knutson Associates (Dickman Knutson, county surveyor) dug for the corner, John Tupa from Hutchinson with a backhoe. They dug a hole 8 feet by 3 feet by 3½ feet deep at the center line of the bituminous road, in line with a fence to the east. They found a hole, or hollow, down at 3½ feet. This hole was about 4 inches square, 3 feet long, leaning to the south, as if a post had been pulled out by road construction. They took reference ties to the bottom of the hole, this was about 6½ feet below the road surface.

1971. Knutson set a McLeod County cast iron monument and took reference ties.

November 20, 1989. We found the cast iron monument in good condition down 6 inches below the road surface. All the reference ties were gone. We retied the monument.

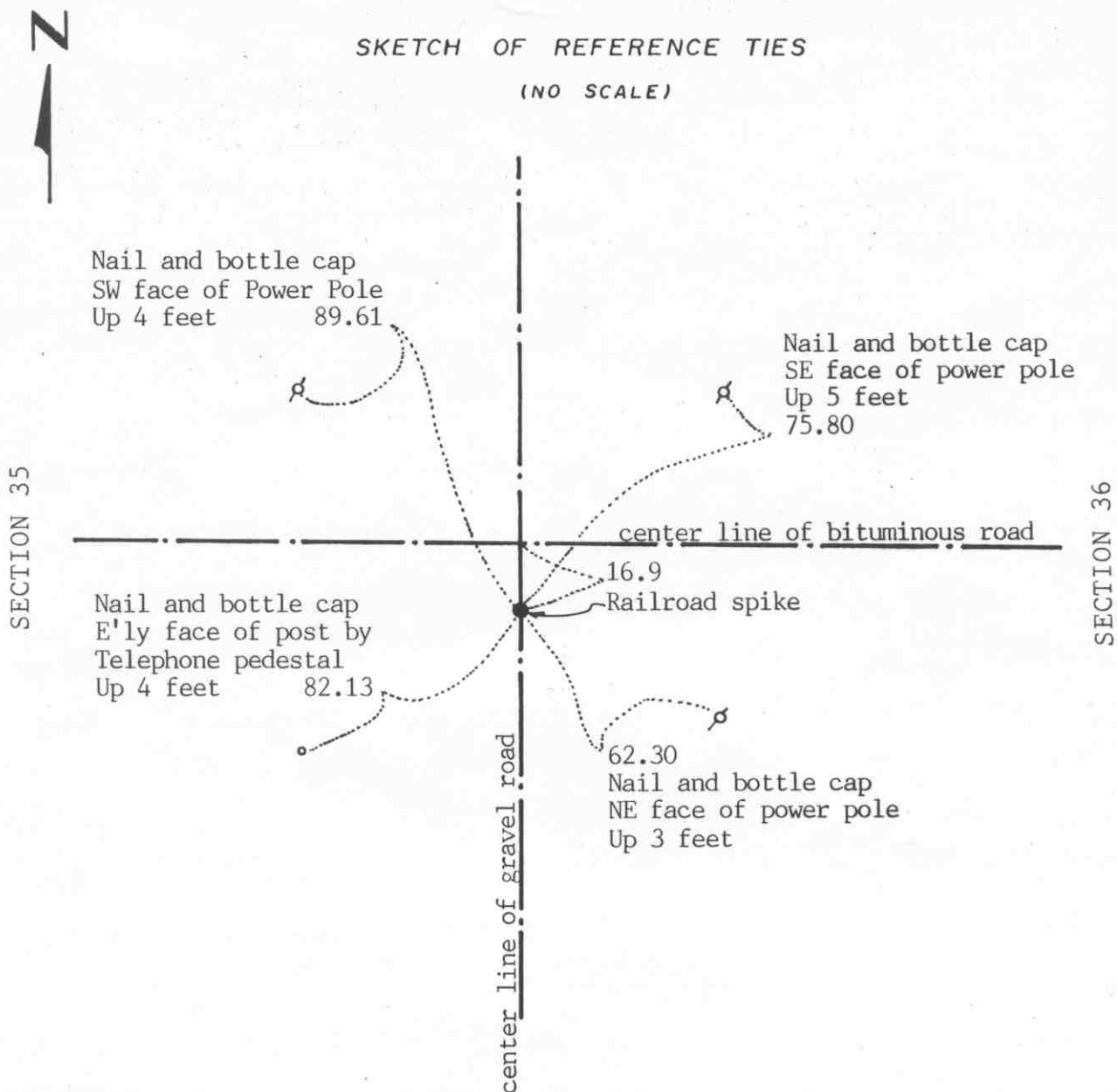
We accept the monument set by Knutson as marking the correct location of the section corner. We believe the hole they found had been made by the monument set by Christlieb being pulled out by the road construction.

EAST QUARTER corner, Section 35, Township 115 North, Range 30 West

# Certificate of Location of Government Corner

## SKETCH OF REFERENCE TIES

(NO SCALE)



Statement of evidence relative to this corner location on sheet 2

I hereby certify that this document was prepared by me or under my direct supervision.

Willard Pellinen

Willard Pellinen  
McLeod County Surveyor  
License No. 9626

Date Jan 17, 1991

OFFICE OF THE COUNTY RECORDER  
MCLEOD COUNTY, MINNESOTA.

I hereby certify that this document was filed in this office at 9 o'clock A.M. on the 22nd day of Jan., 1991.

Carmen Ostlie, County Recorder

By \_\_\_\_\_, Deputy

Document No. 237206



## *Certificate of Location of Government Corner*

August, 1855. Thomas Simpson of the General Land Office established this corner. He set a post in mound with pits, trench and charred stake and he planted osage orange seeds at the northeast and southwest corners of the mound.

1896. I.C.Christlieb, county surveyor, set an iron monument at the corner. This has been destroyed by Highway No. 212 construction.

Highway right of way plans show this corner to be 16.9 feet south of center line station 1321.94.7.

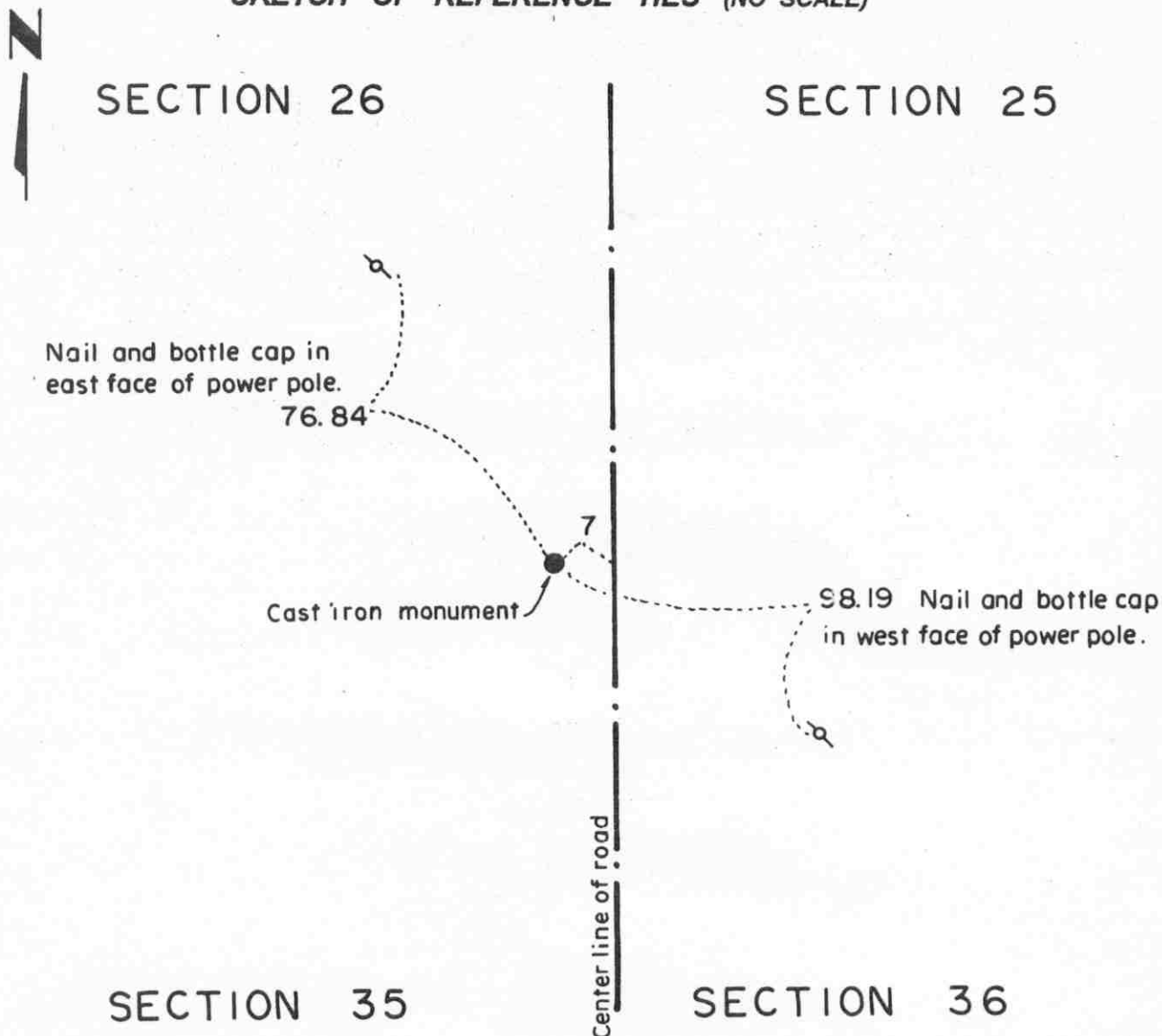
July 1, 1982. We set a railroad spike at the location shown on the highway plans and took reference ties. The corner falls about 3 feet south of a split between the section corners.

January 3, 1990. We found the railroad spike and the reference ties ok.

# Certificate of Location of Government Corner

Northeast corner, Section 35, Township 115 North, Range 30 West

## SKETCH OF REFERENCE TIES (NO SCALE)



### Statement of evidence relative to this corner location on sheet 2

I hereby certify that this document was prepared by me or under my direct supervision.

Willard Pellinen  
Willard Pellinen  
McLeod County Surveyor  
License No. 9626.

Date Dec. 13, 1995

### OFFICE OF THE COUNTY RECORDER MCLEOD COUNTY, MINNESOTA

I hereby certify that this document was filed in this office at 9 o'clock A.M. on the 9th day of January, 19 96.

Carmen Oestlie Mulder County Recorder

By Charles Engelman, Deputy.

Document No. 270194

# **Certificate of Location of Government Corner**

**Northeast corner, Section 35, Township 115 North, Range 30 West**

**August, 1855.** Thomas Simpson of the General Land Office established this corner. He set a post, erected a mound with trench and pits, set a charred stake and planted osage orange seeds at each angle.

**1896.** I. C. Christlieb, surveyor, set an iron monument at this corner.

**October, 1941.** The County Highway Engineer dug for the corner but found no evidence of the corner. He assumed a corner and set an iron pin.

**June 11, 1981.** We excavated for the corner (John Tupa from Hutchinson with a backhoe). We found the iron pin set by the highway engineer and took available ties.

**July 7, 1982.** We measured north, south, east and west from this corner and set a cast iron monument at a proration of the 1896 distances by Christlieb and took ties. The corner fell close to the corner set by the highway engineer.

**July 5, 1995.** We found the cast iron monument down 0.4 ft. below the surface of the road and took new reference ties.

# Certificate of Location of Government Corner

North Quarter corner, Section 35, Township 115 North, Range 30 West

SKETCH OF REFERENCE TIES (NO SCALE)



SECTION 26

Fence

Fence

1 1/2 inch X 2 1/2 inch iron monument

2662.32 to NE cor. of Sec. 35

SECTION 35

Statement of evidence relative to this corner location on sheet 2

I hereby certify that this document was prepared by me or under my direct supervision.

Willard Pellinen  
Willard Pellinen  
McLeod County Surveyor  
License No. 9626.

Date May 15, 1995

OFFICE OF THE COUNTY RECORDER  
MCLEOD COUNTY, MINNESOTA

I hereby certify that this document was filed in this office at 9 o'clock A. M. on the 18th day of May 19 95.

Carmen Estlie Mulder County Recorder

By \_\_\_\_\_, Deputy.

Document No. 265812

## ***Certificate of Location of Government Corner***

***North Quarter Corner, Section 35, Township 115 North, Range 30 West***

***August, 1855. Thomas Simpson of the General Land Office established this corner. He set a post, erected a mound with trench and pits, set a charred stake and planted osage orange seeds at the northeast and southwest corners of the mound.***

***1896. I. C. Christlieb, surveyor, set an iron monument at this corner.***

***July 1, 1982. We found the monument set by Christlieb. It was at the intersection of fences to the north and east.***

NORTH QUARTER corner, Section 2, Township 114 North, Range 30 West

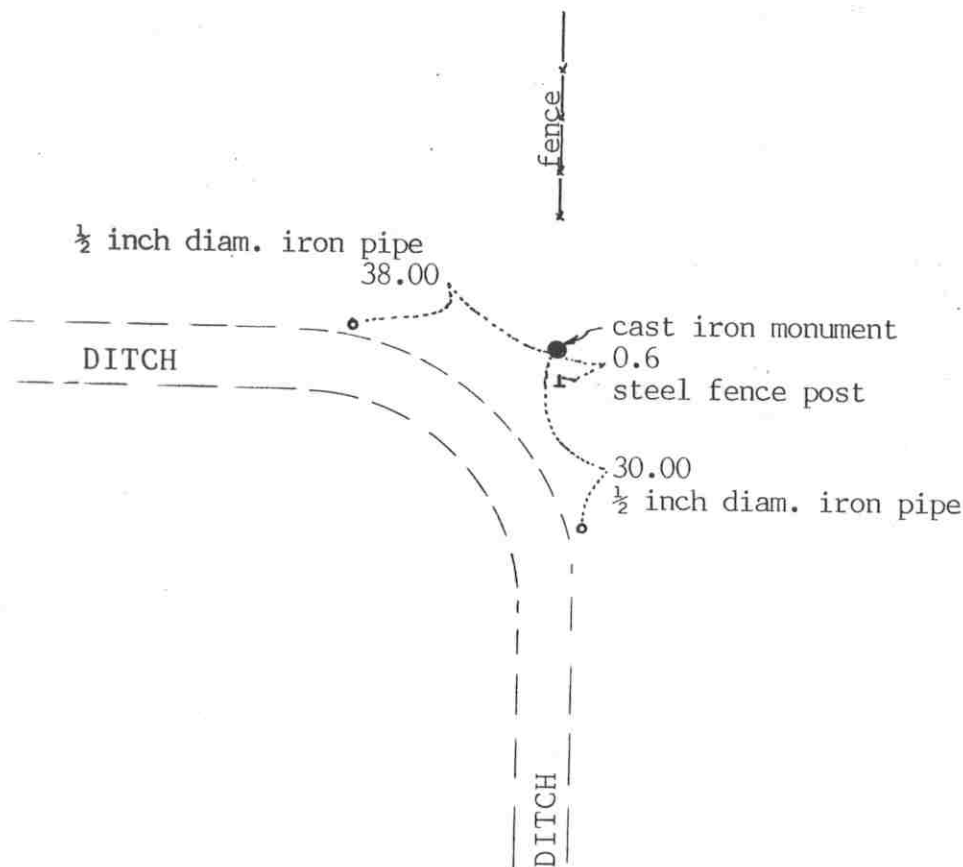
# Certificate of Location of Government Corner



SKETCH OF REFERENCE TIES

(NO SCALE)

SECTION 35, T.115, R.30



SECTION 2, T.114, R.30

Statement of evidence relative to this corner location on sheet 2

I hereby certify that this document was prepared by me or under my direct supervision.

Willard Pellinen

Willard Pellinen  
McLeod County Surveyor  
License No. 9626

Date January 29, 1991

OFFICE OF THE COUNTY RECORDER  
MCLEOD COUNTY, MINNESOTA.

I hereby certify that this document was filed in this office at 1:30 o'clock P.M. on the 4th day of Feb, 1991.

Carmen O'Brien, County Recorder

By \_\_\_\_\_, Deputy

Document No. 237392

North Quarter corner, Section 2, Township 114 North, Range 30 West

## Certificate of Location of Government Corner

This corner was established by the government in 1855. John Ryan set a post, deposited charcoal, dug pits and trench, built mound and planted osage orange seeds at the corners of the mound.

1970. Mr. E. Froemming, who has lived in the Southwest Quarter of Section 35 for 36 years and Mr. John Lietz, who has lived in the Northwest Quarter of Section for 24 years, both say the quarter corner is on the easterly and northerly extension of the ditch and in line with the fence running north.

October 29, 1970. McCombs Knutson Associates (Dickman Knutson, county surveyor) set a McLeod County cast iron monument at the location described by Mr. Froemming and Mr. Lietz. They took available reference ties.

January 9, 1990. We found the cast iron monument in good condition and checked the reference ties. We measured the north line of Section 2 and found the monument to be 6.1 feet west of a split between the section corners and on a straight line between the section corners.

# Certificate of Location of Government Corner

NORTHEAST corner, Section 2, Township 114 North, Range 30 West

SKETCH OF REFERENCE TIES (NO SCALE)

T. 115 N. R. 30 W.

SECTION 35

SECTION 36

Cast iron monument

Nail and bottle cap in  
west face of power pole.  
106.47

Fence  
iron monument  
4.00

141.05  
Nail and bottle cap in  
west face of power pole.

Center line of road

SECTION 2

SECTION 1

T. 114 N. R. 30 W.

Statement of evidence relative to this corner location on sheet 2

I hereby certify that this document  
was prepared by me or under my  
direct supervision.

Willard Pellinen  
Willard Pellinen  
McLeod County Surveyor  
License No. 9626.

Date July 6, 1995

OFFICE OF THE COUNTY RECORDER  
MCLEOD COUNTY, MINNESOTA

I hereby certify that this document was filed in this office at 9  
o'clock A.M. on the 18th day of July  
19 95.

Armen Ostlie, County Recorder

By \_\_\_\_\_, Deputy.

Document No. 266991



**Certificate of Location of Government Corner**  
**Northeast Corner, Section 2, Township 114 North, Range 30 West**

*1855. John Ryan of the General Land Office originally established this corner. He set a post, deposited charcoal, dug pits and trench, built mound and planted osage orange seeds at the corners of the mound.*

*1896. I. C. Christlieb, surveyor, remonumented Collins Township and set a 2 1/2 inch by 2 1/2 inch iron monument 4 feet east of the true corner.*

*1970. Dickman Knutson, county surveyor, found the monument set by Christlieb and set a McLeod County cast iron monument 4 feet west of the found monument and took available reference ties. Knutson left the found monument in place.*

*1990. We found the cast iron monument in good condition. We measured 2657.06 feet to the north quarter corner of Section 2 and 2656.72 feet to the north quarter corner of Section 1 and 2626.61 feet to the east quarter corner of Section 2.*

*February 16, 1995. We checked the reference ties.*

# CERTIFICATE OF LOCATION OF GOVERNMENT CORNER

East Quarter Corner of Section 36, Township 115 N, Range 30 W, 5th P.M.  
 STATE OF MINNESOTA, County of McLeod

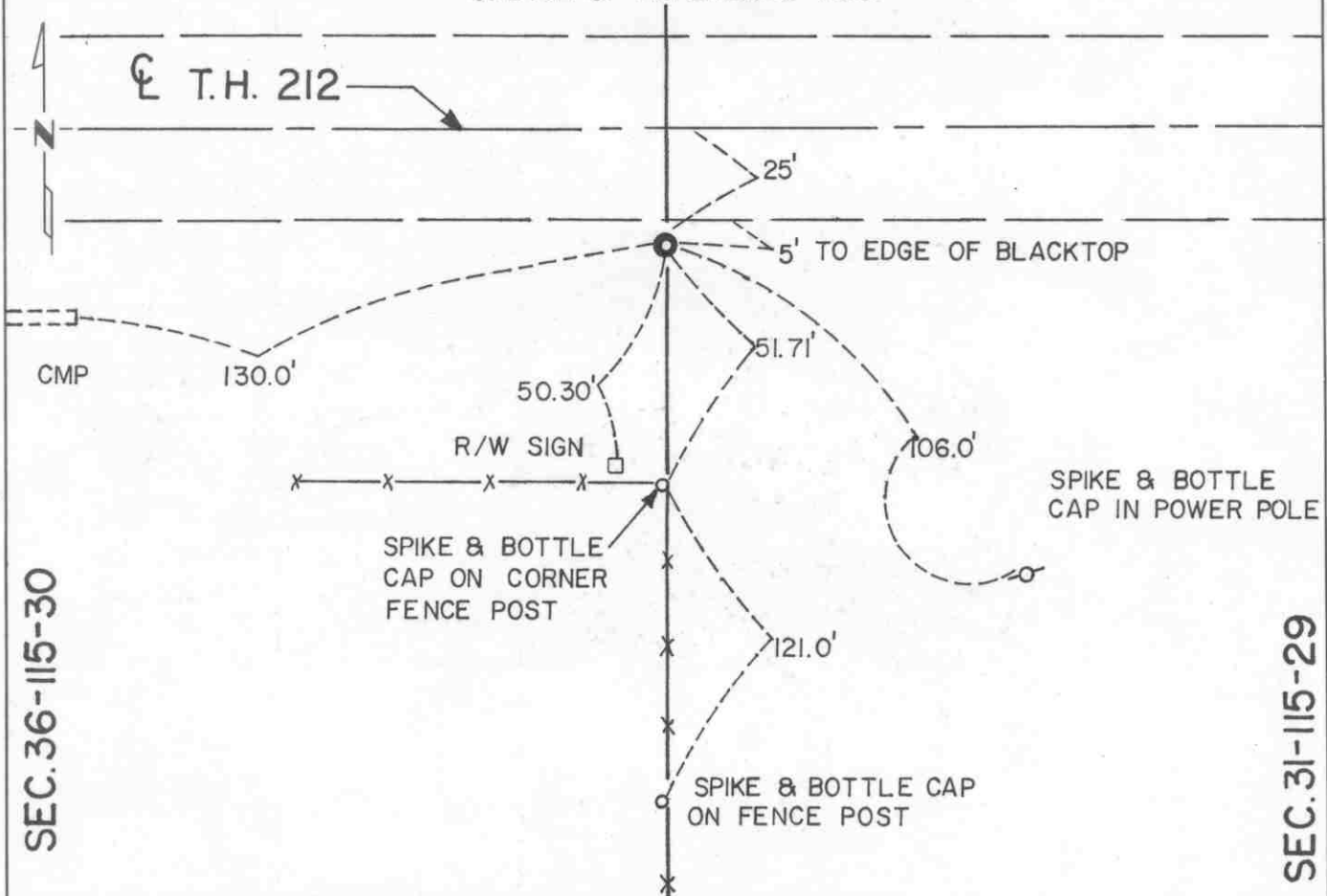
At the corner location shown on the sketch:

☒ On Apr. 16, 1990 found a cast iron monument a few inches below the ground  
DATE In the south shoulder slope of T.H. 212

☒ left monument as found, ☐ lowered monument, ☐ removed monument (explain)

☐ On \_\_\_\_\_ placed a \_\_\_\_\_  
DATE

## SKETCH OF REFERENCE TIES



SEC. 36-115-30

SEC. 31-115-29

Statement of evidence relative to this corner location is on back of page.

I hereby certify that this document and the data contained herein was prepared by me or under my direct supervision.

Robert Jones 8-19-91  
SIGNATURE DATE

Registration No. 11864

☒ Land Surveyor, ☐ Professional Engineer

☐ County Surveyor, ☐ County Engineer

OFFICE OF THE COUNTY RECORDER

County of McLeod

I hereby certify that this document was filed in the Co. Recorders office at 2 P.M. on the 18th day of Aug A.D. 1991

County Recorder Norman Ostlie

By \_\_\_\_\_, Deputy

DOCUMENT NO. 241036

Statement of Evidence:

East Quarter Corner Section 36, T 115 N, R 30 W

- 1855 - The original Public Land Survey of the township line was completed by John Ryan. A wood post was set over a deposit of charcoal in a dirt mound to mark the corner. Trenches and pits were dug to build the mound. Osage orange was planted at the corners of the mound.
- 1896 - I. C. Christlieb, McLeod County Surveyor, set an iron monument to mark the corner.
- 1929 - The Minnesota Highway Department right of way map for T.H. 212 depicts the corner to be near the centerline of an east/west road about 420 feet southerly of the old T.H. 212 centerline P.O.C. 1376+14 as scaled on the map.
- 1959 - Minnesota Highway Department survey notes do not indicate whether anything was found at this corner.
- 1970 - Dickman Knutson, McLeod County Surveyor, found a 1/2" diameter iron pin about 2 feet below the ground and set a cast iron monument over it. It was located about 25 feet south of the centerline of T.H. 212 and in line with a fence line to the south.
- 1990 - R. C. Jones, Registered Land Surveyor with Mn/DOT, found the McLeod County cast iron monument a few inches below the surface of the south shoulder slope of T.H. 212.

The cast iron monument is accepted as the corner location because it is in line with a fence line to the south, it is about 425 feet southerly of old T.H. 212 P.O.C. 1376+14, it is 25 feet south of the centerline of present T.H. 212 P.O.T. 1375+12.4, and it is 0.3 feet south and 6.12 feet west of the lost location.

For additional information, contact the Mn/DOT Surveys Section at Willmar, Mn 56201.

NORTHEAST corner, Section 36, Township 115 North, Range 30 West

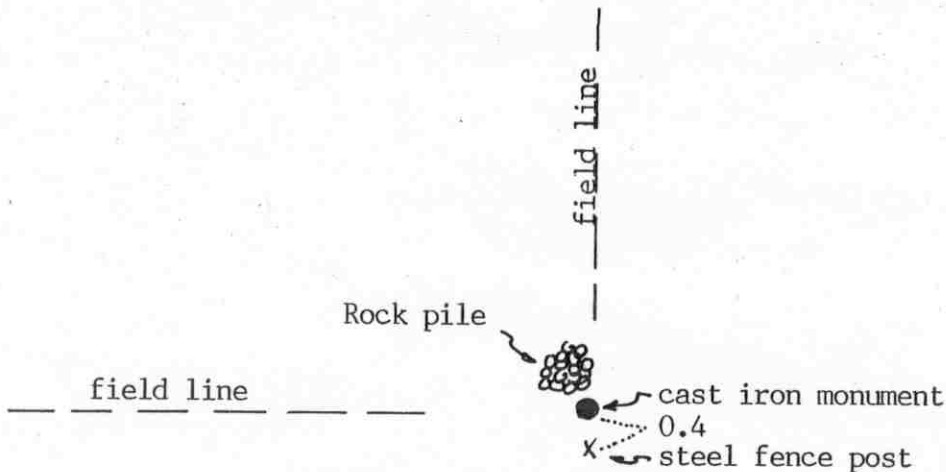
# Certificate of Location of Government Corner

## SKETCH OF REFERENCE TIES

(NO SCALE)

SECTION 25  
T. 115 R. 30

SECTION 30  
T. 115 R. 29



SECTION 36  
T. 115 R. 30

SECTION 31  
T. 115 R. 29

Statement of evidence relative to this corner location on sheet 2

I hereby certify that this document was prepared by me or under my direct supervision.

Willard Pellinen

Willard Pellinen  
McLeod County Surveyor  
License No. 9626

Date July 19, 1994.

OFFICE OF THE COUNTY RECORDER  
MCLEOD COUNTY, MINNESOTA.

I hereby certify that this document was filed in this office at 9 o'clock A. M. on the 16th day of August, 1994.

Carmen Stille Mulder County Recorder

By \_\_\_\_\_, Deputy

Document No. 261304

NORTHEAST corner, Section 36, Township 115 North, Range 30 West*Certificate of Location of Government Corner*

July, 1855. John Ryan of the General Land Office first established this corner. He set a post, deposited charcoal, dug pits and trench and planted osage orange seeds at the corners of the mound of earth which he built.

1896. I. C. Christlieb, county surveyor, set a 2½ inch square iron monument at the corner.

1970. Dickman Knutson, county surveyor, found the iron bar set by Knutson and replaced it with a McLeod County cast iron monument and took reference ties.

April 1, 1994. We found the monument in good condition and checked the reference ties.

# Certificate of Location of Government Corner

North quarter corner, Section 36, Township 115 North, Range 30 West

SKETCH OF REFERENCE TIES (NO SCALE)



SECTION 25

Field line

Field line

Field line

Square iron monument

SECTION 36

Statement of evidence relative to this corner location on sheet 2

I hereby certify that this document was prepared by me or under my direct supervision.

Willard Pellinen

Willard Pellinen  
McLeod County Surveyor  
License No. 9626.

Date July 19, 1994

OFFICE OF THE COUNTY RECORDER  
MCLEOD COUNTY, MINNESOTA

I hereby certify that this document was filed in this office at 9 o'clock A.M. on the 9th day of January, 19 96.

Carmen Ostlie Mulder, County Recorder

By Charleen Engelman, Deputy.

Document No. 270195

## **Certificate of Location of Government Corner**

**North Quarter Corner, Section 36, Township 115 North, Range 30 West**

**August, 1855. Thomas Simpson of the General Land Office established this corner. The corner fell in a pond so he set a witness corner 4 chains west of the true corner.**

**1896. I. C. Christlieb remonumented the Township of Collins and set a square iron monument at this corner.**

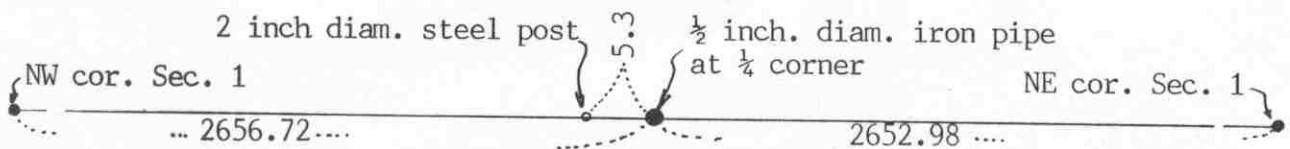
**July 1, 1982. We found the monument set by Christlieb at the intersection of field lines north, east and west.**

NORTH QUARTER corner, Section 1, Township 114 North, Range 30 West

## Certificate of Location of Government Corner

SKETCH OF REFERENCE TIES  
(NO SCALE)

SECTION 36, T.115, R.30

Corner is 0.96 feet north of  
straight line between section  
corners

SECTION 1, T.114, R.30

Statement of evidence relative to this corner location on sheet 2I hereby certify that this document  
was prepared by me or under my  
direct supervision.Willard PellinenWillard Pellinen  
McLeod County Surveyor  
License No. 9626Date January 29, 1991OFFICE OF THE COUNTY RECORDER  
MCLEOD COUNTY, MINNESOTA.I hereby certify that this document was filed in this  
office at 1:30 o'clock P.M. on the 4th day  
of Feb, 1991.Carmen Ostlie, County Recorder

By \_\_\_\_\_, Deputy

Document No. 237390



North Quarter corner, Section 1, Township 114 North, Range 30 West

## Certificate of Location of Government Corner

This corner was originally set by the government in 1855. John Ryan set a post, deposited charcoal, dug pits and trench, built mound and planted osage orange seeds at the corners of the mound.

April 21, 1900. E.L.Higgins, county surveyor, shows the quarter corner to be  $\frac{1}{2}$  way between the section corners. He had a distance of 2652 feet to each section corner.

October 28, 1970. McCombs Knutson Associates (Dickman Knutson, county surveyor) found a steel axle at the corner. They measured 2656.72 feet to the northwest corner and 2652.98 feet to the northeast corner of Section 1. Higgins used a found iron monument at the northwest corner of the section where I.C.Christlieb in 1896 set a monument 4 feet east of the true corner, which probably accounts for the 4 feet difference Knutson had to the northwest corner.

January 9, 1990. We found the monument had been plowed out. We reset the monument using Knutson's reference ties and distances.

We accept the axle found by Knutson as having perpetuated the correct location of the quarter corner. This axle was probably set by Higgins in 1900.

# CERTIFICATE OF LOCATION OF GOVERNMENT CORNER

Northeast Corner of Section I, Township 114 N, Range 30 W, 5 th P.M.

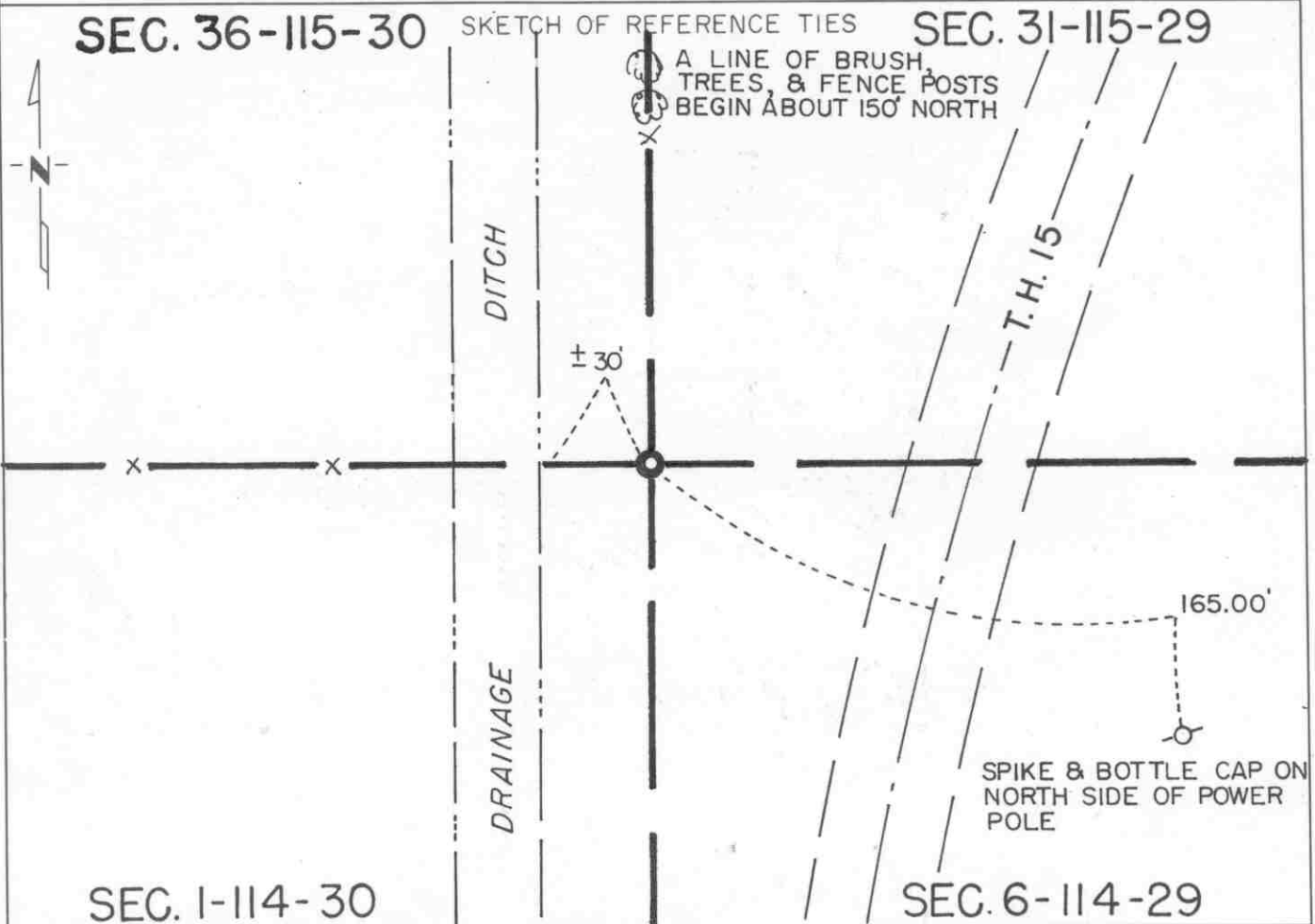
STATE OF MINNESOTA, County of McLeod

At the corner location shown on the sketch:

☒ On June 13, 1991 found a cast iron monument at ground surface  
DATE

☒ left monument as found, ☐ lowered monument, ☐ removed monument (explain)

☐ On \_\_\_\_\_ placed a \_\_\_\_\_  
DATE



Statement of evidence relative to this corner location is on back of page.

I hereby certify that this document and the data contained herein was prepared by me or under my direct supervision.

Robert J. Jones 8-26-91  
SIGNATURE DATE

Registration No. 11864

☒ Land Surveyor, ☐ Professional Engineer

☐ County Surveyor, ☐ County Engineer

OFFICE OF THE COUNTY RECORDER

County of McLeod

I hereby certify that this document was filed in the Co. Recorders office at 2 P. M. on the 18th day of Sept, A.D., 1991

County Recorder Carmen Botchie

By \_\_\_\_\_, Deputy

DOCUMENT NO. 240996

Statement of Evidence:

Northeast Corner Section 1, T 114 N, R 30 W

- 1855 - The original Public Land Survey of the township line was completed by John Ryan. A wood post was set over a deposit of charcoal in a dirt mound. Trenches and pits were dug to build the mound. Osage orange was planted at the corners of the mound.
- 1896 - I. C. Christlieb, McLeod County Surveyor, set a 2 1/2" square iron monument to mark the corner.
- 1944 - The Minnesota Highway Department right of way map from this era shows the corner to be 13.5 feet west of P.O.S.T. 645+69.1.
- 1959 - Minnesota Highway Department survey notes show that a 2" square iron was found one foot below ground at the intersection of fence lines north and west. It was located 2702 feet southerly of T.H. 212 P.O.T. 1375+11.5.
- 1970 - Dickman Knutson, McLeod County Surveyor, found the 2 1/2" square iron monument and set a McLeod County cast iron monument.
- 1990 - A Mn/DOT survey crew recovered the cast iron monument and tied it into the McLeod County Coordinate System.
- 1991 - R. C. Jones, Registered Land Surveyor with Mn/DOT, found the cast iron monument at the ground surface.

The cast iron monument is accepted as the corner location because it closely fits a field division to the west, it fits a fence line across T.H. 15 to the east, it is nearly in line with a line of small trees and brush to the north, it fits the location shown on the 1944 right of way map for T.H. 15 within 2 or 3 feet, and it is located 2701.00 feet southerly of T.H. 212 P.O.T. 1375+11.5, which fits the 1959 M.H.D. survey very well.

For additional information, contact the Mn/DOT Surveys Section at Willmar, Mn 56201.